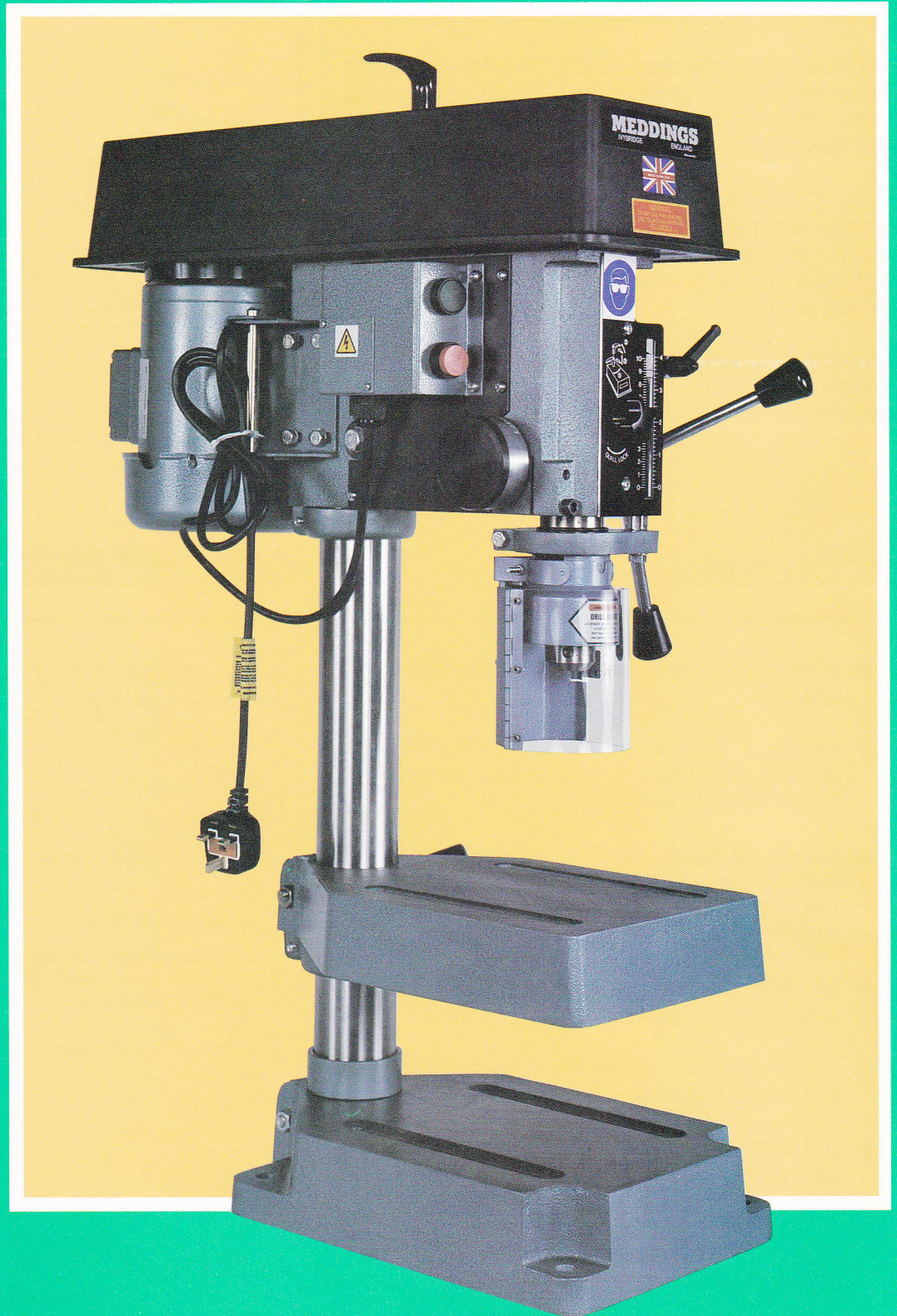


DRILTRU MkIII

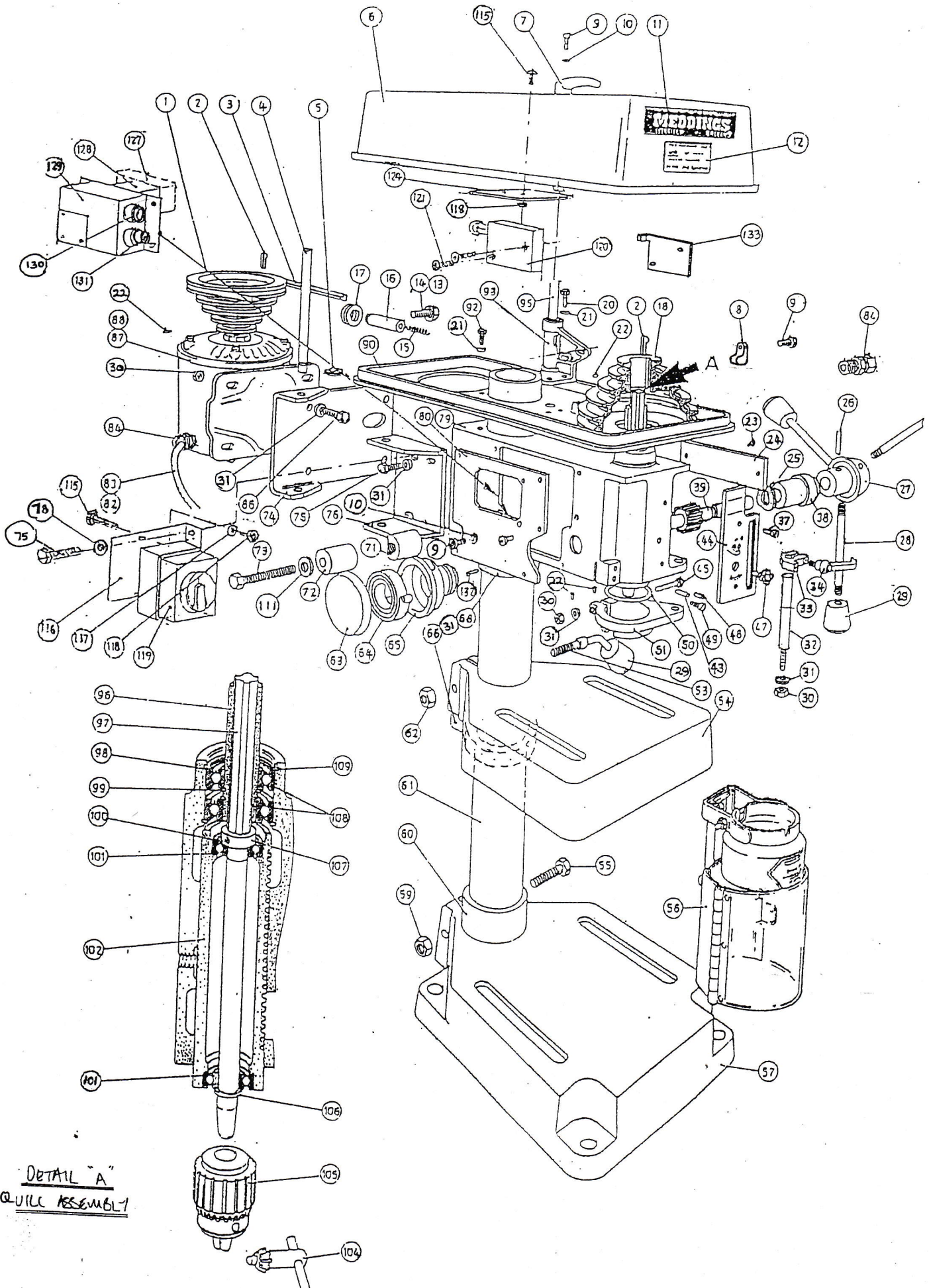
13mm Capacity



MEDDINGS

Drilling Machines

DRILTRU

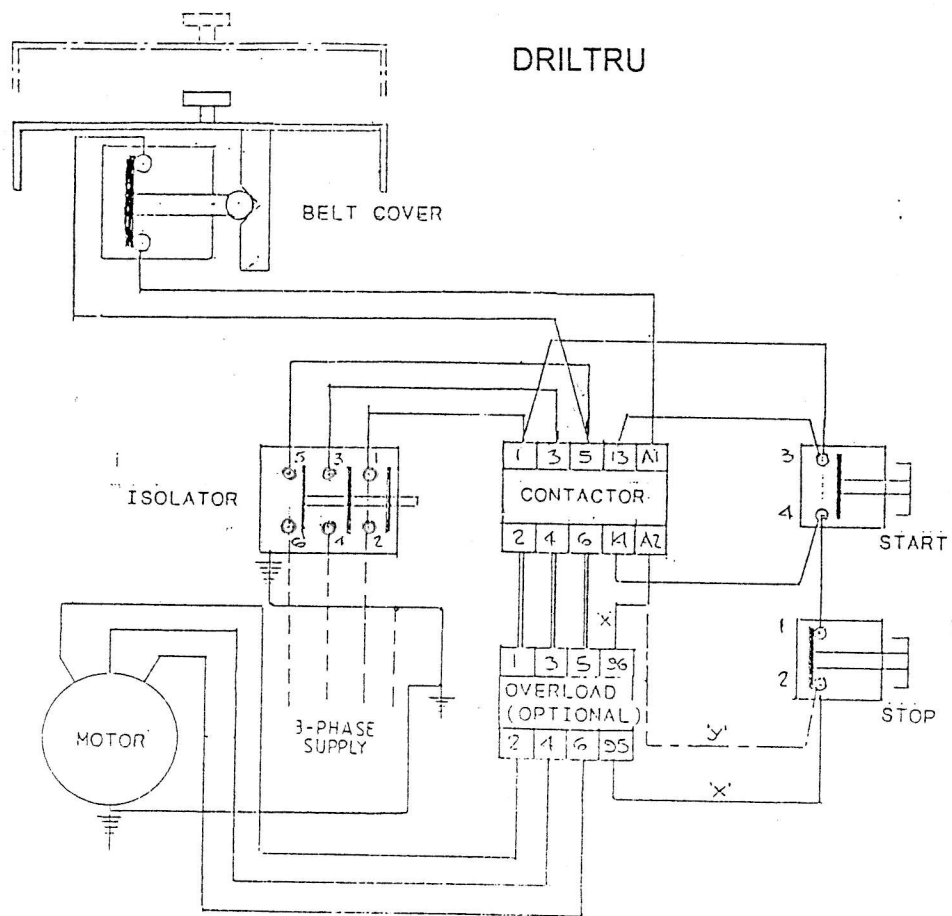


DETAIL "A"
QUILL ASSEMBLY

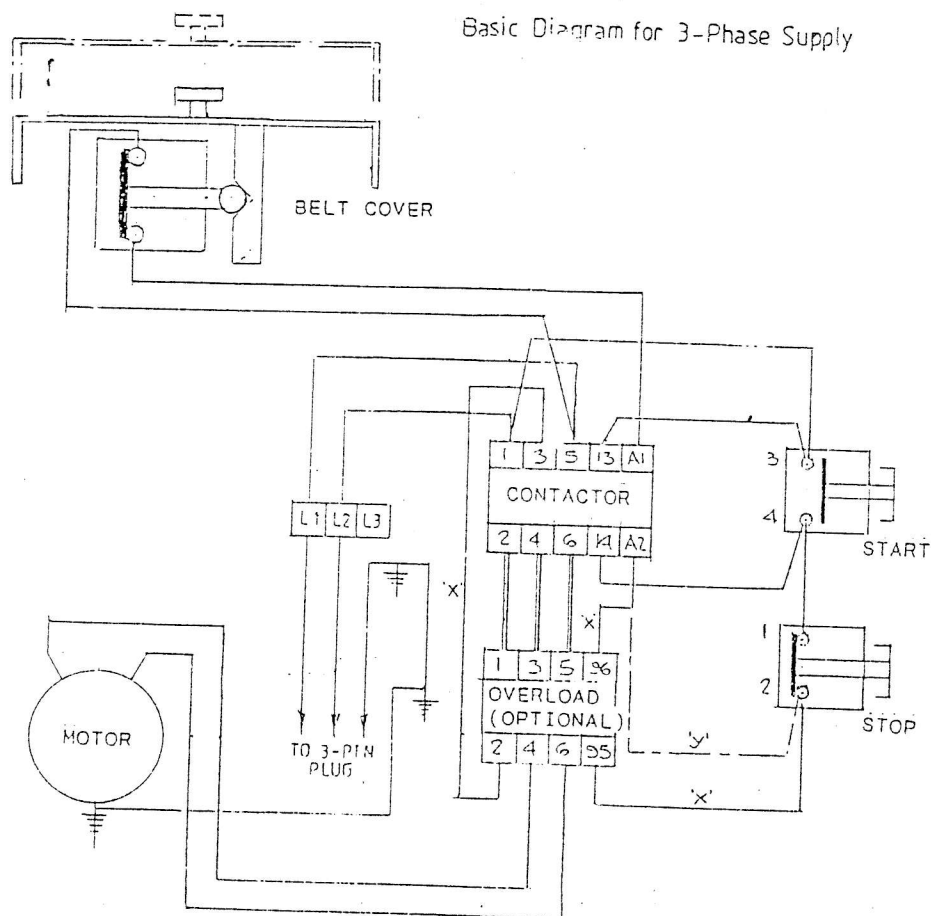
Dritru Parts List

Item Part No	Part No	Description	Qty	Item Part No	Part No	Description	Qty
1	10-19432	Motor pulley	1	64	10-345	Quill return spring	1
2	10-20267	Key	2	65	10-11015	Spring box	1
3	10-7594	Vee belt	1	66	10-714	Safety collar	2
4	10-20010	Hinge pin	1	68	10-19110	M8 x 35 hex head screw	2
5	10-20203	Circlip	1	71	10-20015	Locking bush ~ threaded	1
6	10-20006	Belt cover	1	72	10-20016	Locking bush ~ plain	1
7	10-20103	Handle	1	73	10-19128	M10 x 75 hex head bolt	1
8	10-19462	P clip	1	74	10-20009	Motor plate	1
9	10-18327	M5 x 10 Pozi pan head screw	13	75	10-20157	M8 x 12 hex head screw	4
10	10-20107	M5 lock washer	13	76	10-20008	Hinge plate	1
11	10-17604	Name plate	1	79	10-20014	Head casting	1
12	10-19192	Warning label (guard)	1	80	10-20013	Cover plate ~ standard	1
13	10-20049	Knoblet M6	1	82	10-19330	4 core cable ~ 3 Phase	OR 1
14	10-18342	M6 x 16 socket head cap screw	1	83	10-19331	3 core cable ~ 1 Phase	1
15	10-20012	Spring	1	84	10-19397	Cable clip	1
16	10-20011	Plunger	1	86	10-18405	M8 x 16 hex head screws	4
17	10-20214	Grommet	1	87	10-19860	1/2 HP 3 phase motor	1
18	10-703	Spindle pulley	1	88	10-19861	1/2 HP 1 phase motor	1
20	10-20118	M6 x 16 hex head screw	2	90	10-20007	Head top plate	1
21	10-20128	M6 washer	7	92	10-20047	M6 x 10 hex head screw	5
22	10-19121	M6 x 10 socket set screw	4	93	10-20003	Bracket, belt cover latch 10-22297	1
23	10-1791	No 4 x 3/16" drive screw	2	95	10-20114	Plunger assembly	1
24	10-20199	Lubrication instruction plate	1	96	10-20030	Carrier sleeve	1
25	10-20262	Waived washer	1	97	10-20159	Main spindle No 6 JT	1
26	10-10174	3/16" x 1 1/2" roll pin	1	98	10-11936	Waived washer	1
27	10-20263	Starwheel hub	1	99	10-515	Circlip	2
28	10-21123	Starwheel rod	3	100	10-19112	M6 x 6 socket head screw	1
29	10-21127	Knob	4	101	10-70	Spindle bearing	2
30	10-18318	M8 nut	6	102	10-20158	Quill	1
31	10-18319	M8 washer	12	104	10-12939	Chuck key	1
32	10-22142	Scale rod	1	105	10-100	0 ~ 13 chuck, 6 JT	1
33	10-22139	Scale block	1	106	10-13585	Spring ring external	1
34	10-22205	Locking handle	1	107	10-505	Small collar	2
37	10-18327	M5 x 10 pozi pan head screw	13	108	10-7167	Carrier sleeve bearing	2
38	10-20019	Activating gear bush	1	109	10-508	Circlip	2
39	10-20021	Activating gear assembly	1	111	10-18343	M10 washer	1
43	10-14264	1/4" x 1/2" dowel pin	1	114	10-21735	3 pin plug & cable, 1 phase	1
44	10-20031	Graduation plate	1	115	10-17652	M4 x 10 pozi pan screw	4
45	10-18322	M8 x 60 hex head bolt	1	116	10-21734	Isolator mounting bracket	1
47	10-18313	Quill locking screw	1	117	10-21712	M4 shakeproof washer	2
48	10-20197	M8 x 12 set screw	1	118	10-18435	M4 nut	4
49	10-20117	M8 x 35 cap head screw	1	119	10-20602	Isolator complete	1
50	10-20050	"O" ring	1	120	10-20110	Safety switch	1
51	10-20026	Scale carrier	1	121	10-20111	M3 x 25 socket counter sunk screw	2
53	10-21125	Table locking handle	1	124	10-21746	Cover, column opening	1
54	10-8938	Table	1	127	10-20880	Motor overload, 3 phase (optional)	1
55	10-19126	M10 x 50 hex head screw	1	127	10-20884	Motor overload, 1 phase (optional)	1
56	10-19455	Chuck guard	1	128	10-21347	Contact, 415 volt, 3 phase	1
57	10-8935	Base, bench & floor machines	1	128	10-21348	Contact, 230 volt, 1 phase	1
59	10-18296	M10 nut	1	129	10-21340	Enclosure & cover plate	1
60	10-9521	Spacing ring	1	130	10-21388	Green start button assembly	1
61	10-20036	Bench column	OR 1	131	10-21387	Red stop button assembly	1
61	10-20035	Floor column	1	132	10-20113	3/16" x 3/4" roll pin	1
62	10-20129	Table locking nut	1	133	10-21769	Locking plate, safety switch	1
63	10-19059	Spring box cover	1				

Driltru ~ Issue 500000 ~ Revised 2005



Basic Diagram for 3-Phase Supply



Basic Diagram for Single Phase Supply

Electrical Connections (Diagram Two)