

LIST No. VV 4

Parkinsons **Vises**



J. PARKINSON & SON
THE "PERFECT" VISE MAKERS
SHIPLEY · YORKS

TELEPHONE:
SHIPLEY 568

TELEGRAMS:
"TEMPLES" SHIPLEY

Parkinsons Vises



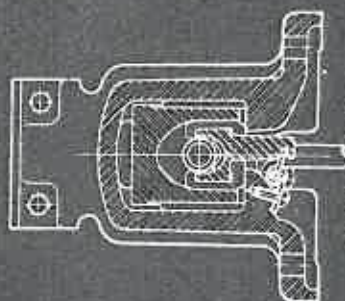
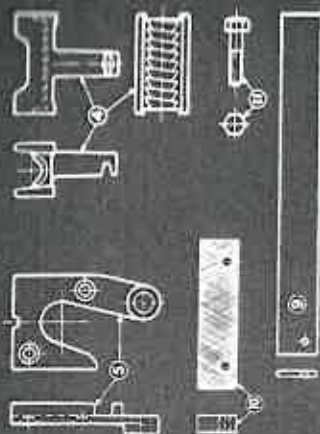
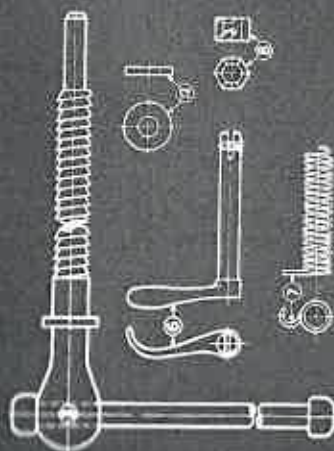
FOR
MOTORISTS, ENGINEERS
AND WOODWORKERS

Parkinsons

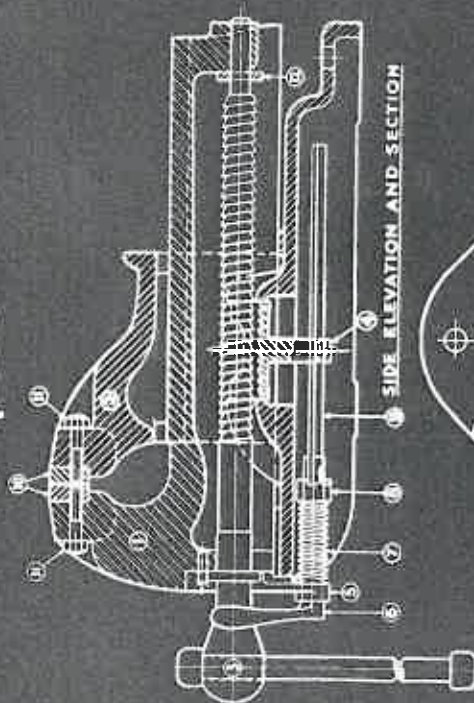
MODEL F "PERFECT" VISE

for ENGINEERS

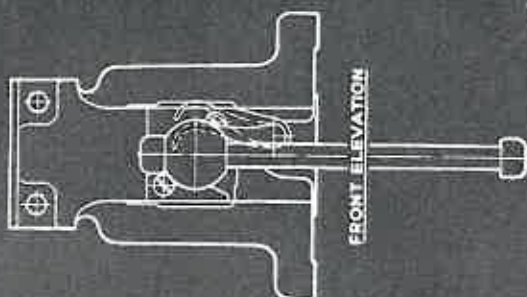
Continuous Screw and Quick Action
No. 6



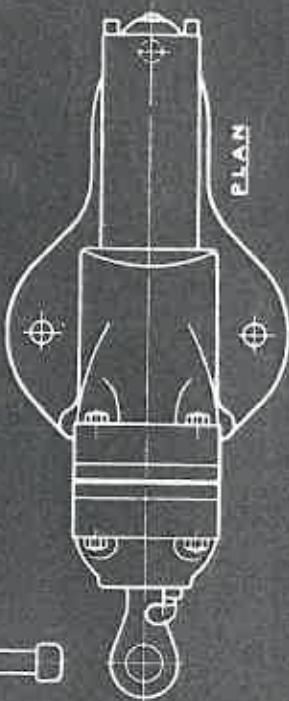
BACK ELEVATION



SIDE ELEVATION AND SECTION



FRONT ELEVATION



PLAN

COMPONENT PARTS

- 1 FRONT JAW OR ADJUSTING BACK JAW ON BODY CASTING
- 2 BACK JAW ON BODY CASTING
- 3 BUTTERFLY THREAD SCREW WITH HANDLE
- 4 HALF-NUT WITH BUTTERFLY THREAD
- 5 KEYS
- 6 TRIGGER
- 7 TRIGGER SPRING
- 8 BUSHING FOR ADJUSTING TRIGGER OR TRIGGER SPRING
- 9 ROCKER BAR
- 10 STEEL JAW PLATE WITH REMOVED FACE
- 11 SET SCREWS FOR SECURING JAW PLATES
- 12 WASHER TO LIMIT SLIP MOVEMENT

MANUFACTURED BY
J. PARKINSON & SON,
THE "PERFECT" VISE MAKERS
SHIPLEY, ENGLAND

SECTIONAL VIEWS

THERE'S NO NEED FOR AN INTRODUCTION.

For over 55 years we have manufactured Vises.

Over half-a-century! It's a long time!!

Yet, though the time be long, Parkinsons' Vises have steadfastly fulfilled the confidence reposed in them.

They have established a reputation throughout the World for value and service.

To-day, there is scarcely an Engineering Works or Workshop where Vises are employed that does not recognise their worth.

Exacting tests, frequently made, ensure that "Parkinson quality" is maintained.

The invariable reliability and the reasonable cost have created a universal demand.

The name "Parkinson" associated with "Vises" has long been recognized as a guarantee of good faith and honest value.

Our products are **BETTER**, more **RELIABLE** and **STRONGER** to-day than ever—and were never more **POPULAR**

They have stood the best of all tests—

"THE TEST OF TIME"

Our name or Trade Mark appears on every Vise that leaves our Factory, which are guarantees of origin and safeguards against imitations.

We will replace, free of charge, any part that falls through defective material or workmanship, but do not accept responsibility for consequential damage or expenses.

We esteem the goodwill of our customers and strive to increase its value.

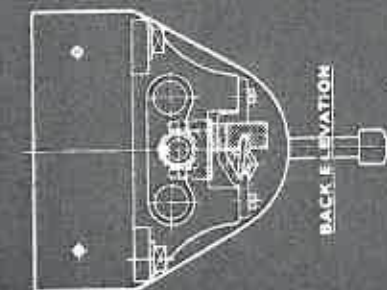
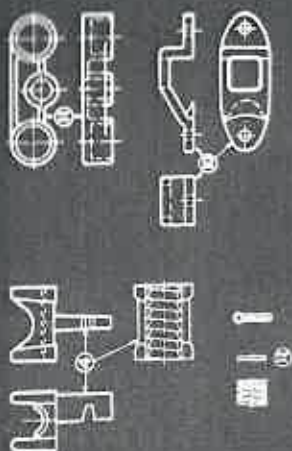
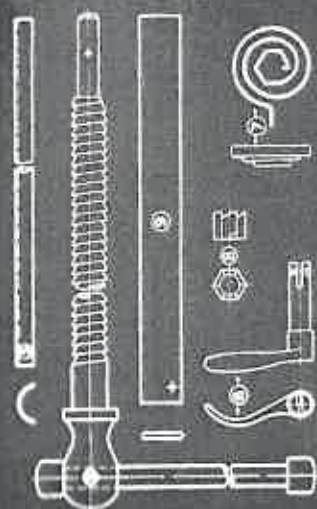
The accumulated experience of years is at the service of our clients.

J. PARKINSON & SON,
THE "PERFECT" VISE MAKERS,
SHIPLEY, YORKS.

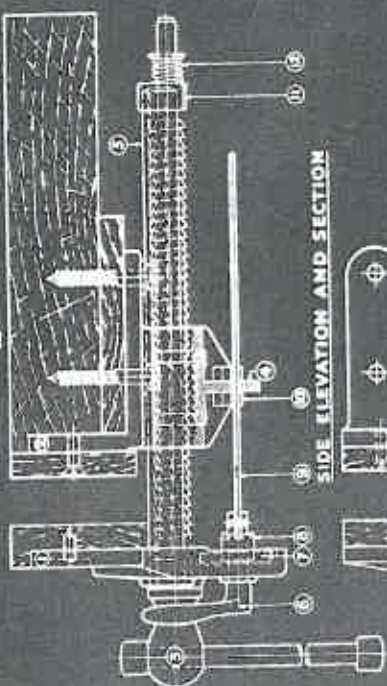
Parkinson's "PERFECT" VISE

for
WOOD WORKERS

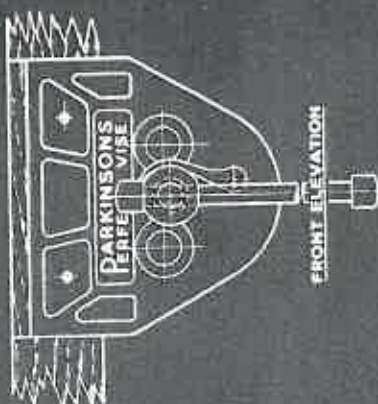
Continuous Screw and Quick Action
NO. 14 C



BACK ELEVATION



SIDE ELEVATION AND SECTION



FRONT ELEVATION

COMPONENT PARTS

1. MAIN BODY, WITH UNREMOVABLE
BACK AND ON ONE CASTING
2. HANDLE, WITH ONE CASTING
3. ADJUSTER, THREADED SCREW WITH
BUTTERFLY
4. HALF-BOLT WITH BUTTERFLY THREAD
5. COVER FOR SCREW AND BOLT
6. THROTTLE
7. THROTTLE SPRING
8. THROTTLE WITH ONE ADJUSTING
THROTTLE ON THROTTLE SPRING
9. ROCKER BAR
10. GUIDE FOR ROCKER BAR
11. MAIN SPRING BAR
12. MAIN SPRING, WATER PUMP
COVER TYPE



SIMPLE
MECHANISM
NO FRICTION
NO WEAR

Manufactured By
J. PARKINSON & SON,
THE "PERFECT" VISE MAKERS
SINCE 1888

SECTIONAL VIEWS
and
SUGGESTIONS FOR FIXING.

TELEPHONE: NO. 566 (2 LINES).
TELEGRAMS: "TEMPLES, PHONE, SHIPLEY."
CABLES: TEMPLES SHIPLEY.
CODES: A.B.C. 5TH EDITION.
MARCONI.



J. PARKINSON & SON,

PARTNERS: ERNEST PARKINSON, EDWARD PARKINSON, HARRY PARKINSON

THE "PERFECT" VISE MAKERS,
SHIPLEY, YORKS.



JOSEPH
PARKINSON



ERNEST
PARKINSON



EDWARD
PARKINSON



HARRY
PARKINSON

At the date of issue of this Edition of our Catalogue, it is nearly 60 years since the Founder of our Firm commenced to make Vises for sale.

That was in the year 1882, and at that time, his ideas did not aspire beyond a small parallel Vise that was intended for use on the work benches of the amateur mechanics of that day.

What happened two years later is briefly described on Page 16 of this Issue.

Since then our Vises have become known throughout the Engineering World.

We have a great and honourable tradition of personal character, industry and achievement behind us, which the second and third generations have striven to maintain.

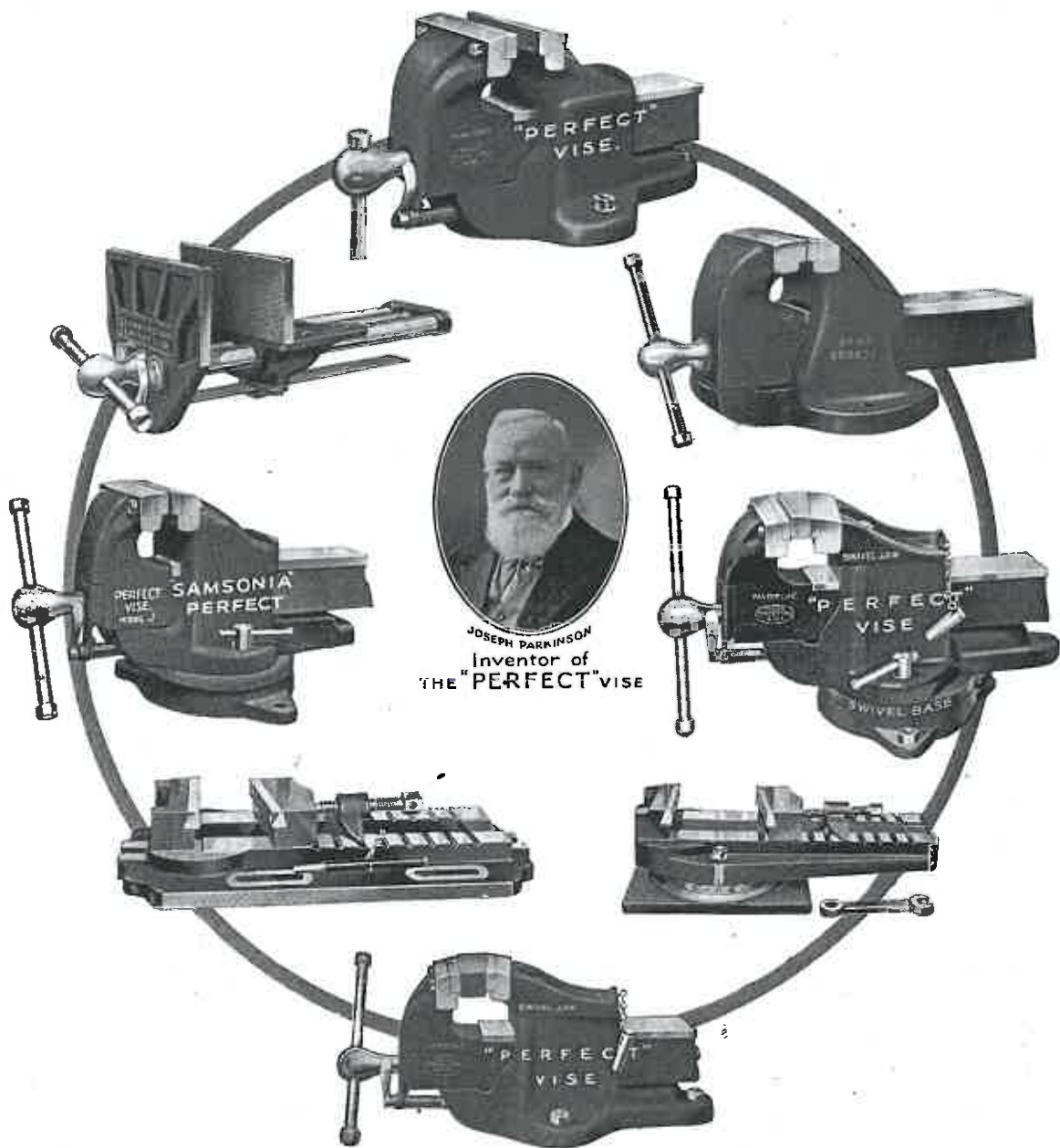
We do not in this Edition shew any new lines, nor do we claim any novelties, but are keeping your old friends, and all the articles listed have an established reputation and successful sale.

This, our Latest List, is largely a reprint of our March, 1937 Edition (List RR.1) excepting for the printed prices, which have been revised, and to which appropriate discounts will apply.

Yours faithfully,

Ernest Parkinson
Edward Parkinson
Harry Parkinson

January 1, 1940.



THE FOUR BEST SELLERS.

The "**HANDY**" Vise. Screw action only. Pages 7 to 12.



The "**PERFECT**" Vise, Model F (Cast Iron body). Screw and quick action. Pages 17, 21 and 23.



The "**PERFECT**" Vise, Model J or "**SAMSONIA**." (Steel Castings). Screw and quick action. Pages 19 and 25.



The "**PERFECT**" Vise for Woodworkers. Screw and Quick Action. Pages 31 to 34.



Parkinsons

"HANDY" VISES SCREW ACTION ONLY.

(Registered Design No. 689821)

We were the first makers of this type of vise.

It was originally made in small sizes for amateurs and quickly became popular.

The demand for larger sizes for workshop use followed.

It has screw action only and is perfectly satisfactory for specialized or repetition work which does not vary much in size, and for which the jaws have not to be opened or closed considerable distances to accommodate articles of widely differing dimensions.

Subject to reasonable usage, these vises will last a lifetime.

Where frequent changes of jaw opening are to be made, the "Perfect" or Quick Grip vises (see pages 14 to 26) are recommended, because they reduce the waste of time in obtaining the required jaw space to the minimum.

Size No.	Width of Jaw	Depth of Jaw	Opening	Weight	PRICE
0a	2 $\frac{1}{4}$ ins.	1 $\frac{1}{2}$ ins.	2 ins.	6 $\frac{1}{4}$ lbs.	£ s. d. 0 10 6
1a	2 $\frac{1}{2}$ "	1 $\frac{5}{8}$ "	2 $\frac{3}{4}$ "	8 "	0 12 0
1	3 "	1 $\frac{7}{8}$ "	3 $\frac{1}{4}$ "	12 "	0 14 6
2	3 $\frac{1}{2}$ "	2 $\frac{3}{8}$ "	4 "	20 "	0 19 6
3	4 "	2 $\frac{3}{4}$ "	4 $\frac{1}{2}$ "	32 "	1 5 0
3a	4 $\frac{1}{2}$ "	3 "	5 $\frac{1}{2}$ "	40 "	1 13 0
3b	5 "	3 $\frac{1}{4}$ "	6 $\frac{1}{2}$ "	50 "	2 1 0
3c	6 "	3 $\frac{1}{2}$ "	8 "	66 "	2 15 0
3d	7 "	4 "	9 $\frac{1}{4}$ "	92 "	3 5 0
3e	8 "	4 "	9 $\frac{1}{4}$ "	95 "	3 12 0

Parkinsons

"HANDY" VISES

SCREW ACTION ONLY.

(Registered Design No. 689821)



THIS strong plain pattern screw vise is the outcome of over 55 years experience and is made in a range of sizes, from small vises suitable for home use by the **amateur** and **motorist**, to larger sizes for **garage** and **workshop** use.

The screws are from forged bars with Machine Cut threads.

The nuts are solid and **don't wear out.**

The jaw plates are of hardened steel and renewable.

SPECIFY

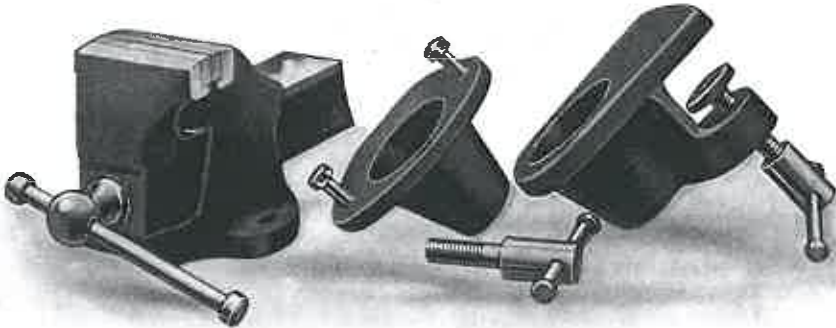


Parkinsons

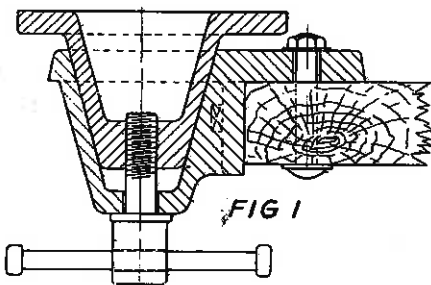
SWIVEL BASES FOR "HANDY" VISES

Overhung Type. (Patented No. 250049).

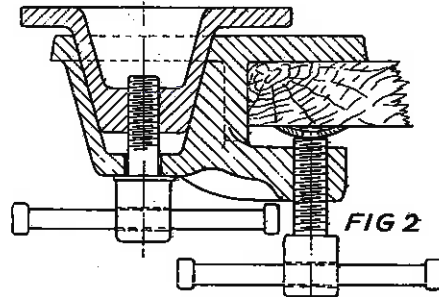
This Overhung Type of Swivel Base is supplied for all sizes of our "Handy" Vises up to No. 3 size (4-in. jaw, $4\frac{1}{2}$ -in. opening).



Vise with separate parts of Swivel Base as Fig. 2, for clamping to bench.



To be fixed to bench or table by screws or bolts.



To be fixed by clamping screw to edge of bench or table, or other convenient place.

These Swivel Bases may be supplied fitted to our "Handy" Vises, or separately, to fit Vises previously supplied.

Their use is not restricted to home, garage or amateurs' requirements, but Vises so fitted are valuable additions to the bench of the engineer's fitter, or to the tool kit of men "working out on jobs."

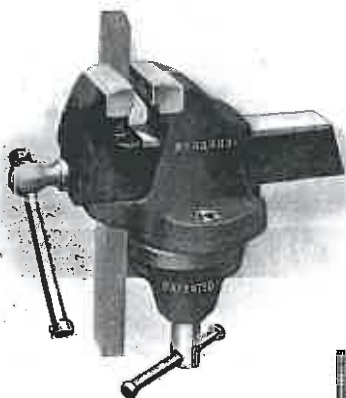
This Overhung Type of Swivel Base is free from the objection to most other swivel bases, that long articles held vertically in the Vise, by coming in contact with the front edge of the bench, prevent the vise being swivelled more than a few degrees.

The facility with which this type will permit such articles to be swivelled through an arc of more than 180° , at one gripping between the jaws, is shown by the following illustrations.

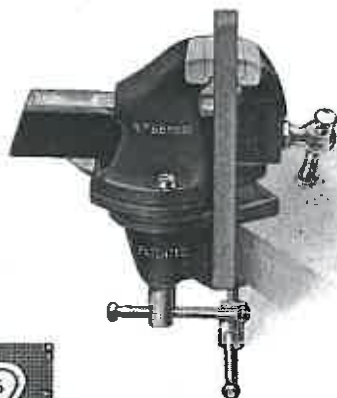
Parkinsons

"HANDY" VISES ON SWIVEL BASES

These illustrations show the extent to which a long article projecting downwards can be swivelled through a wide angle without fouling the edge of the bench, and without having to change the "grip" between the jaws, and how the vise may be swivelled so as to bring the surface on which the operator desires to work to the most accessible position to suit his comfort and convenience, without him having to work at a disadvantage, bending over the bench.



Vise swivelled to left.



Vise swivelled to right.

Style 1 is fixed to bench by screws or bolts.

Style 2 (as illustrated) has also screw for clamping under table.

Size No.	Width of jaw	Depth of jaw	Opens	Style 1		Style 2	
				Weight	Price	Weight	Price
0a	in. 2½	in. 1½	in. 2	lb. 10	£ s. d. 0 16 6	lb. 10½	£ s. d. 0 18 3
1a	2½	1½	2½	11½	0 18 0	12½	0 19 9
1	3	1¾	3¼	17	1 1 6	17¾	1 4 0
2	3½	2	4	27	1 8 6	29	1 11 6
*3	4	2½	4½	40	1 14 6	41½	1 18 0

When ordering state whether Style 1 or Style 2 Base is required.

*The No. 3 Vise is also made with Style 3 Base (Expanding Ring Type) see pages 11-12

Parkinsons

SWIVEL BASES FOR "HANDY" VISES

Expanding Ring Type, Style 3.

Whilst the **Overhung Type** of swivel base, see pages 9 and 10, answers all requirements for the smaller sizes of vises, the type here shown is recommended for the larger and heavier vises.

It consists of a stationary portion to be fixed to the bench, a swivelling plate to which the vise is fixed by screws, a central swivel pin which holds the swivelling plate to the stationary base, and which fits in a recess in the base, and the wedge-shaped nut and lever screw by which the ring is expanded to fit tightly in the recess.



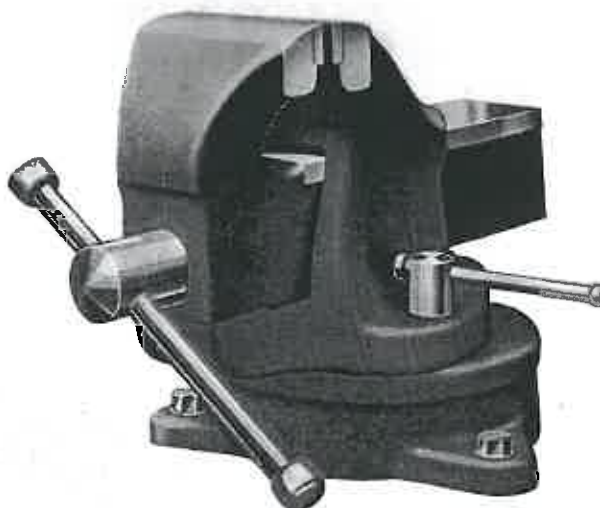
Parts of Swivel Base.
(Style 3 or expanding Ring Type).

The vise is offset on the swivelling plate so as to permit long articles held vertically, to be swivelled through a longer arc, without fouling the edge of the bench, than would be possible if set central.

Parkinsons

"HANDY" VISES ON SWIVEL BASES

Expanding Ring Type, Style 3.



The Expanding Ring Type (Style 3) is recommended for larger and heavier vises. It clamps firmly and releases easily.

Size No.	Width of jaw	Depth of jaw	Opens	Weight	Price
	in.	in.	in.	lb.	£ s. d.
*3	4	2½	4½	46½	1 17 0
3a	4½	3	5½	61½	2 7 6
3b	5	3½	6½	71	2 16 6
3c	6	3½	8	92½	3 13 0
3d	7	4	9½	119½	4 4 0
3e	8	4	9½	122½	4 11 0

SPECIFY



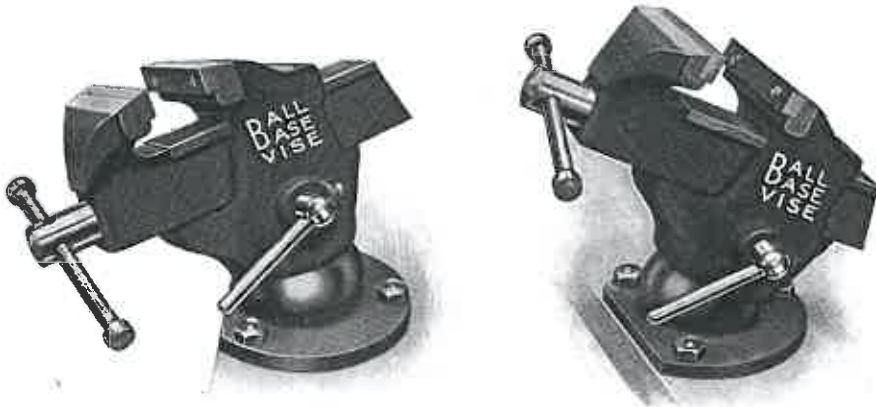
*The No. 3 Vise is also made with Overhung Type Base, Styles 1 and 2, see pages 9 and 10.

When ordering, state which style is required, 1, 2 or 3.

Parkinsons

BALL BASE VISE

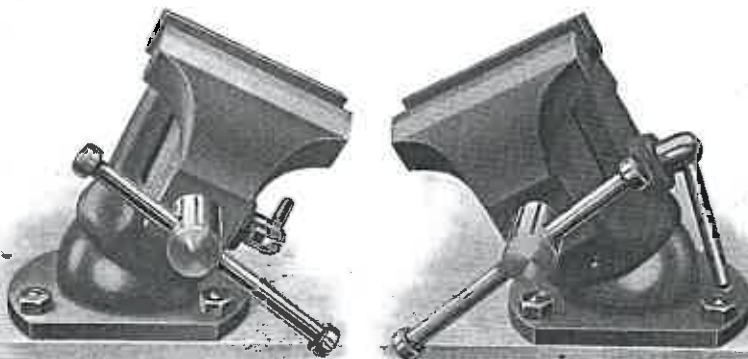
(Patented No. 155084).



The Ball Base Vise will swivel in any direction without disturbing the article held between the jaws, and is clamped at any point by the lever at the side. It is of special value to those who make patterns, dies, etc., but its usefulness is not limited to such work nor to awkward jobs, for it is useful to all who have small vise work to do.

Width of jaw	4 in.	Opening	3 in.
Depth of jaw	1½ in.	Weight	16 lb.

Price £1 16s. 0d.



**IT IS EASIER TO SWIVEL THE VISE TO SUIT THE MAN THAN
FOR THE MAN TO SWIVEL HIMSELF TO SUIT THE VISE.**

Parkinsons

The "Perfect" Vise

Originated and patented by JOSEPH PARKINSON, in 1884—over 55 years ago—at a time when a Quick Action Vise was regarded as a luxury.

It won its way to favour because it retained the most valuable feature of the Screw-type of Vise—**unlimited cramping movement**—in combination with **quick action**, and has long been the recognised standard for Vises in the Engineering World.

FEATURES OF GENUINE PARKINSONS VISES :

Sufficient mass of the right metal at the right place.

The Special buttress thread screws and nuts of "PERFECT" Vises, form the most durable combination. While other forms of thread wear worse—this wears better.

Jaw Plates of special steel—serrated faces—hardened—renewable.

Exercise of painstaking care in all details, i.e., provision for lubrication, smooth working, interchangeability of parts, etc.

Exacting tests frequently made, to ensure that "Parkinson quality" is maintained. The accumulation is—

RIGIDITY.

STRENGTH.

DURABILITY.

THERE IS NO SUBSTITUTE FOR OVER 55 YEARS' EXPERIENCE IN THE MANUFACTURE OF VISES.

SPECIFY—and see that you get—**GENUINE PARKINSONS VISES.**

OUR TRADE MARKS.

All "Perfect" Vises bear one of the following Trade Marks, which are guarantees of origin. Each of these includes the word "Perfect." Insist on seeing these marks on the goods and secure satisfaction.



Trade Mark on
Model F "Perfect" Vises
(Cast Iron) listed on pages
17-18 and 21-24



Trade Mark on
Woodworkers' "Perfect" Vises
listed on pages 33 and 34.



Trade Mark on
"Samsonia" or Model J
"Perfect" Vises (Steel)
listed on pages 19-20 and 25-26.

HISTORICAL SURVEY.

The workshop appliance known as a VISE is an indispensable necessity to every mechanical industry.

Broadly defined, a VISE may be described as a PRESS or CRAMP for holding, gripping or pressing articles to be filed, bent, or otherwise manipulated, and accepting this definition, Vises are mechanical hands which relieve the muscles of the fatigue of continuously gripping.

The young craftsman of to-day scarcely realizes how much the equipment at his disposal excels that of a generation ago, or the extent to which his labour has been lightened by the modern "quick grip" Vise—to most a Vise is but a Vise; nothing more.

The VISE, as a mechanical appliance was originally invented in the year 420 B.C. by Archytas, of Tarentum, a disciple of Pythagoras.

We have no record of the design or form of this early appliance but we may infer that it comprised two "jaws," one fixed, the other hinged to it like the jaws of a crocodile and that a screw was used for obtaining the clamping action familiarly known as "grip."

This may be described as the "Vise of Antiquity."

In the absence of further information, it seems reasonable to suppose that although methods of construction were improved, there was no important change of principle until the introduction of the parallel vise, by which the hinged jaw, with its angular movement, and gripping face that was only parallel with its mate in one position, was replaced by a movable jaw which moved in one plane, and in which the gripping faces were parallel in all positions.

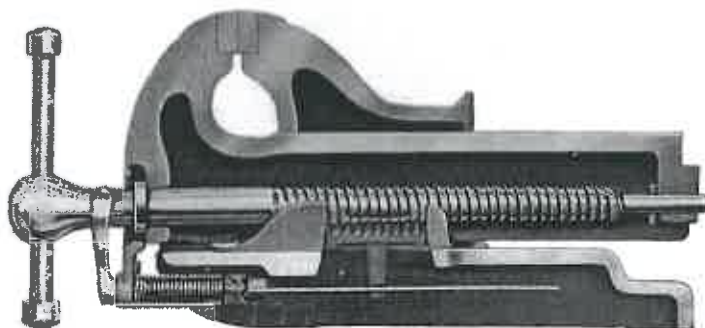
Almost coincident with the introduction of the parallel vise there were numerous attempts to eliminate the waste of time resulting from the slow action of opening and closing the jaws by rotating the screw, and in the latter half of the 19th century a number of different patterns of vises were put on the market, in which was embodied a principle then variously described as the "Instantaneous Movement," "Sudden Grip," or "Rapid Transit."

Some of the quick acting vises had a considerable sale, but whilst they saved time by enabling the movable jaw to be moved quickly in or out, most of them proved deficient in cramping capacity, that is, they provided only a

Parkinsons

HISTORICAL SURVEY—continued.

very limited cramping movement, and were, therefore, unsuitable for many of the operations for which a vise is used, and none of these succeeded in replacing the screw operated vise.



But in 1884, Joseph Parkinson, by a series of circumstances which form a very interesting story and one of the romances of industry, too long to relate here, was led to invent and patent a vise which retained all the cramping movement of the ordinary screw vise, in combination with the quick and free adjustment of the "Instantaneous Movement," in such a way that the problem of retaining all that was good in the old type of vise, whilst eliminating its wasteful expenditure of time and energy, was for the first time successfully solved.

THIS VISE WAS BOLDLY NAMED THE "PERFECT" VISE.

Events have proved it worthy of the name. It is a parallel vise ; a screw-all-the-way vise ; a sudden-grip-at-any-point vise ; so that not only does it effect an immense saving of time, but it is so easy to operate that it **conserves the physical and nervous energy of the workman for useful work.**

**IT IS WITH THE "PERFECT" VISE THAT
THE CRAFTSMAN OF TO-DAY IS FAMILIAR.**

The best Vise produced in the 19th Century and STILL REIGNS SUPREME.

Parkinsons

MODEL F

"PERFECT" VISES

CONTINUOUS SCREW AND QUICK ACTION.
CAST-IRON BODIES of Guaranteed Strength.

Special methods are employed in the manufacture to ensure the greatest possible strength in the castings, and to maintain uniform quality.

The steel jaw plates are well hardened, and are fixed by hexagon head screws from the outside.

VICES WITH FIXED BASE.

Size No.	Width of Jaw	Depth of Jaw	Opens	Weight	Price
5	3 $\frac{1}{4}$ ins.	2 $\frac{3}{8}$ ins.	4 ins.	32 lbs.	£ s. d. 1 14 0
6	3 $\frac{3}{4}$ "	3 "	5 "	45 "	2 1 0
7	4 $\frac{1}{4}$ "	3 $\frac{3}{8}$ "	6 "	61 "	2 9 0
8	5 $\frac{1}{4}$ "	3 $\frac{1}{4}$ "	7 "	74 "	3 0 0
8a	6 "	4 $\frac{1}{8}$ "	8 "	94 "	3 11 0
9	6 $\frac{1}{2}$ "	4 $\frac{1}{2}$ "	9 "	116 "	4 10 0
9a	7 $\frac{1}{2}$ "	5 "	10 "	144 "	5 16 0

NOTE.—Vises are sent with fixed bases unless swivel bases are specified.

Parkinsons

MODEL F

"PERFECT" VISES

**CONTINUOUS SCREW AND QUICK ACTION.
CAST-IRON BODIES of Guaranteed Strength.**



SPECIFY

For Vises on Swivel Bases, see pages 23 and 24.

For Swivel Jaw Vises, see page 21.



FIXED BASE

Parkinsons

MODEL J

**"SAMSONIA
PERFECT"**

VICES

CONTINUOUS SCREW AND QUICK ACTION.

**"SAMSONIA
STEEL"** REGD.

**UNBREAKABLE
IN USE**

This model is recommended for those who desire strength and lightness

The steel jaw plates are well hardened, and are fixed by hexagon head screws from the outside.

VICES WITH FIXED BASE.

Size No.	Width of Jaw	Depth of Jaw	Opens	Weight	PRICE
37	4½ ins.	3 ins.	5½ ins.	41 lbs.	£ s. d. 3 14 0
38	5½ "	3½ "	6½ "	49 "	4 9 0
38a	6 "	4 "	7¾ "	60 "	5 11 0
39	7 "	4½ "	8 "	81 "	6 9 0

NOTE.—Vices are sent with fixed bases unless swivel bases are specified.

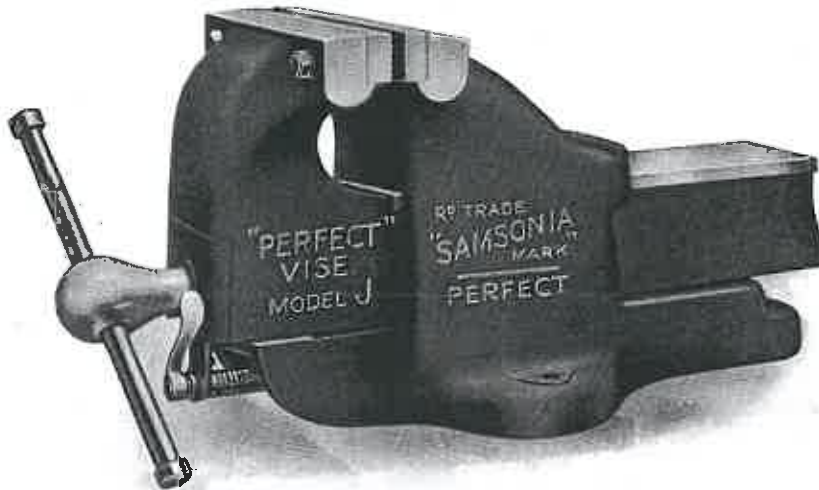
Parkinsons

MODEL J

"SAMSONIA PERFECT" VISES

CONTINUOUS SCREW AND QUICK ACTION.

"SAMSONIA STEEL" REGD. **UNBREAKABLE IN USE.**



SPECIFY



For Vises on Swivel Bases, see pages 25 and 26.

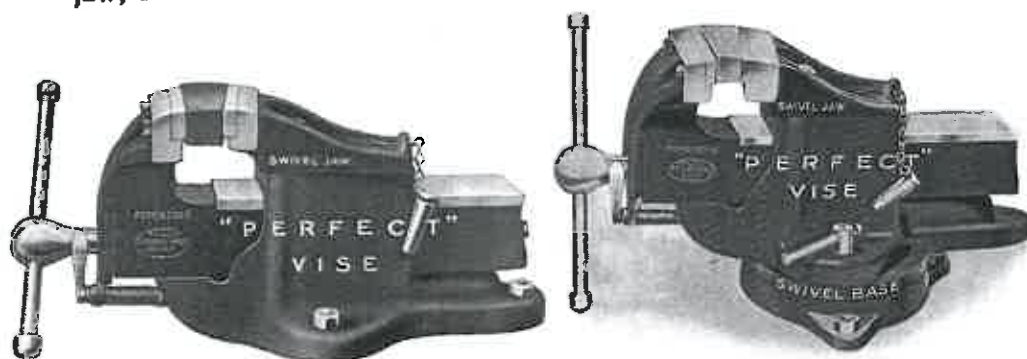
FIXED BASE.

Parkinsons

MODEL F

"PERFECT" VISES with Swivel Jaws CONTINUOUS SCREW AND QUICK ACTION. (Model F only).

Three sizes of "PERFECT," Vises, Model F, may be had with swivel jaw, as shewn.



The back jaw is mounted to swivel on a large diameter stud, and thus adapts itself to the taper of pieces which cannot be properly held between parallel jaws.

A dowel pin is supplied for fixing the swivel jaw in the parallel position.

With Swivel Jaws and Fixed Bases.

Size No.	Width of Jaw	Depth of Jaw	Opens	Weight	PRICE
7	4½ ins.	3¾ ins.	6 ins.	66 lbs.	£ s. d. 3 5 0
8	5½ " "	3¾ " "	7 " "	79 " "	3 18 0
8a	6 " "	4½ " "	8 " "	96 " "	4 10 0

With Swivel Jaws and Swivel Bases.

Size No.	Width of Jaw	Depth of Jaw	Opens	Weight	PRICE
7	4½ ins.	3¾ ins.	6 ins.	86 lbs.	£ s. d. 3 17 0
8	5½ " "	3¾ " "	7 " "	104 " "	4 13 0
8a	6 " "	4½ " "	8 " "	123½ " "	5 7 6

For Vises without Swivel Jaws, see pages 17-18 and 23-24.

SWIVEL BASES FOR "PERFECT" VISES

These are of the expanding ring type and all parts except the screws are of cast-iron. They may be supplied separately to receive the vises with plain or fixed bases shown on pages 17 to 21, no fitting being required beyond screwing the vise to the swivel plate.

Each base consists of a stationary portion to be fixed to the bench, a swivelling plate to which the vise is fixed by screws, a central swivel pin which holds the swivelling plate to the stationary base, and which fits in a recess in the base, and the wedge-shaped nut and lever screw by which the ring is expanded to fit tightly in the recess, the various components being shown below.



Swivel Plate.

Expanding or Clamping Ring.

Base Plate

The vise is offset on the swivelling plate, so as to permit long articles held vertically, to be swivelled through a longer arc without fouling the edge of the bench than would be possible if set central.

For Model F "Perfect" Vises
as pages 17-18 & 21.

Size No.	Weight.	Price.
		£ s. d.
5	14½ lbs.	0 9 6
6	19½ "	0 11 6
7	20 "	0 12 0
8	25 "	0 15 0
8a	27½ "	0 17 6
9	27½ "	0 19 0
9a	29 "	1 4 0

For Model J "Perfect" Vises
as pages 19-20.

Size No.	Weight.	Price.
		£ s. d.
37	19½ lbs.	0 12 0
38	20 "	0 15 0
38a	25 "	0 17 6
39	27½ "	0 19 0

NOTE.—The Model J Vises have steel bodies, but the swivel base castings are of cast iron.

Prices on this page are for Bases only. For prices of vises fitted with swivel bases, see pages 21, 23 and 25.

Parkinsons

MODEL F

"PERFECT" VISES

**CONTINUOUS SCREW AND QUICK ACTION.
CAST-IRON BODIES of Guaranteed Strength.**

Special methods are employed in the manufacture to ensure the **greatest possible strength** in the castings, and to maintain **uniform quality**.

The **steel jaw plates** are well hardened, and are fixed by hexagon head screws from the outside.

The **Swivel Base** is of the expanding ring type described on page 22 ; the Vise is offset on the swivelling plate so as to permit long articles held vertically to be swivelled through longer arc without fouling the edge of the bench than would be possible if set central.

Swivel Bases may be ordered separately for Vises previously obtained with fixed bases—separate prices for swivel bases are given on page 22.

VICES WITH SWIVEL BASE.

Size No.	Width of Jaw	Depth of Jaw	Opens	Weight	PRICE
5	3 $\frac{1}{2}$ ins.	2 $\frac{3}{8}$ ins.	4 ins.	46 $\frac{1}{2}$ lbs.	£ s. d. 2 3 6
6	3 $\frac{3}{4}$ "	3 "	5 "	64 $\frac{1}{2}$ "	2 12 6
7	4 $\frac{1}{2}$ "	3 $\frac{3}{8}$ "	6 "	81 "	3 1 0
8	5 $\frac{1}{2}$ "	3 $\frac{1}{2}$ "	7 "	99 "	3 15 0
8a	6 "	4 $\frac{1}{8}$ "	8 "	121 $\frac{1}{2}$ "	4 8 6
9	6 $\frac{1}{2}$ "	4 $\frac{1}{2}$ "	9 "	143 $\frac{1}{2}$ "	5 9 0
9a	7 $\frac{1}{2}$ "	5 "	10 "	173 "	7 0 0

NOTE.—Unless **swivel bases** are specified, **fixed bases** as pages 17 and 18 will be supplied.

Parkinsons

MODEL F

"PERFECT" VISES

**CONTINUOUS SCREW AND QUICK ACTION.
CAST-IRON BODIES of Guaranteed Strength.**



For Vises on Fixed Bases, see page 17-18.
For Swivel Jaw Vises, see page 21.

SPECIFY



SWIVEL BASE.

Parkinsons

MODEL J

"SAMSONIA PERFECT" VISES

CONTINUOUS SCREW AND QUICK ACTION.

"SAMSONIA STEEL" UNBREAKABLE IN USE.

This model is recommended for those who desire **strength** and **lightness**.

The **steel jaw plates** are well hardened, and are fixed by hexagon head screws from the outside.

The **Swivel Base** is of the expanding ring type described on page 22; the Vise is offset on the swivelling plate so as to permit long articles held vertically to be swivelled through longer arc without fouling the edge of the bench than would be possible if set central. The swivel base castings are of cast-iron—not steel.

Swivel Bases may be ordered separately for Vises previously obtained with fixed bases—separate prices for swivel bases are given on page 22.

VICES WITH SWIVEL BASE.

Size No.	Width of Jaw	Depth of Jaw	Opens	Weight	PRICE
37	4½ ins.	3 ins.	5½ ins.	60½ lbs.	£ s. d. 4 6 0
38	5½ „	3½ „	6½ „	69 „	5 4 0
38a	6 „	4 „	7¾ „	85 „	6 8 6
39	7 „	4½ „	8 „	108½ „	7 8 0

NOTE.—Unless **swivel bases** are specified, **fixed bases**, as pages 19 and 20, will be supplied.

Parkinsons

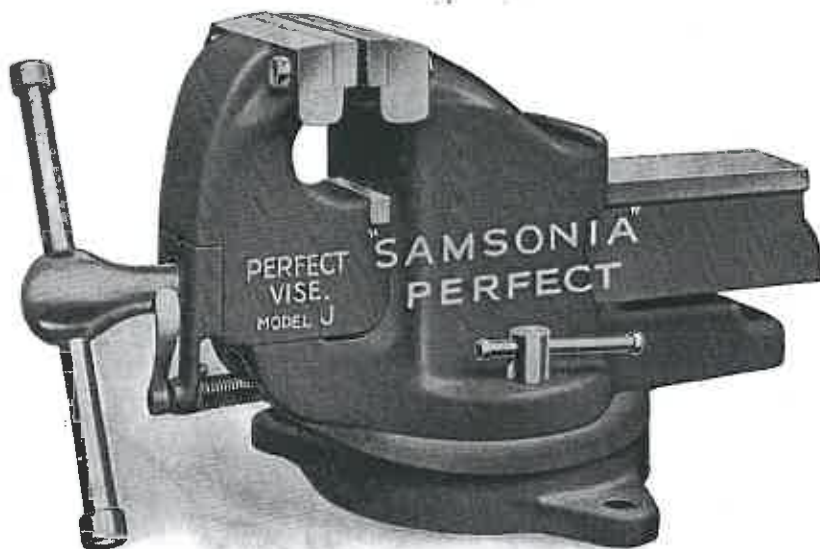
MODEL J

"SAMSONIA PERFECT" VISES

CONTINUOUS SCREW AND QUICK ACTION.

**"SAMSONIA
STEEL"** REGD.

UNBREAKABLE
IN USE.



SPECIFY

PARKINSONS
MODEL J

BY TRADE
"SAMSONIA"
MARK
"PERFECT"

For Vises on Fixed Bases, see pages 19-20.

SWIVEL BASE.

Parkinsons

STEEL VISES

SCREW ACTION ONLY.

UNBREAKABLE IN USE.

These Vises are made from the same castings as the Model J "SAMSONIA PERFECT" Vises shewn on pages 19 and 20, except fitted with square-thread Screw and Nut for screw action only.

VICES WITH FIXED BASE.

Size No.	Width of Jaw	Depth of Jaw	Opens	Weight	PRICE
37P	4½ ins.	3 ins.	5½ ins.	41 lbs.	£ s. d. 3 12 6
38P	5¼ "	3½ "	6½ "	49 "	4 7 0
38aP	6 "	4 "	7¾ "	60 "	5 8 0
39P	7 "	4½ "	8 "	81 "	6 6 0

NOTE.—Vises are sent with fixed bases unless swivel bases are specified

Parkinsons

STEEL VISES

SCREW ACTION ONLY.

UNBREAKABLE IN USE.



For Vises on Swivel Bases see pages 29 and 30.

Parkinsons

STEEL VISES

SCREW ACTION ONLY.

UNBREAKABLE IN USE.

These Vises are made from the same castings as the Model J "SAMSONIA PERFECT" Vises shewn on pages 25 and 26, except fitted with square-thread Screw and Nut for screw action only.

The Swivel Base is of the Expanding Ring Type, described on page 22; the Vise is offset on the swivelling plate so as to permit long articles held vertically to be swivelled through a longer arc without fouling the edge of the Bench, than would be possible if set central. The Swivel Base Castings are Cast Iron—not Steel.

VICES WITH SWIVEL BASE.

Size No.	Width of Jaw	Depth of Jaw	Opens	Weight	PRICE
37P	4½ ins.	3 ins.	5½ ins.	60½ lbs.	£ s. d. 4 4 6
38P	5¼ "	3½ "	6½ "	69 "	5 2 0
38aP	6 "	4 "	7¾ "	85 "	6 5 6
39P	7 "	4½ "	8 "	108½ "	7 5 0

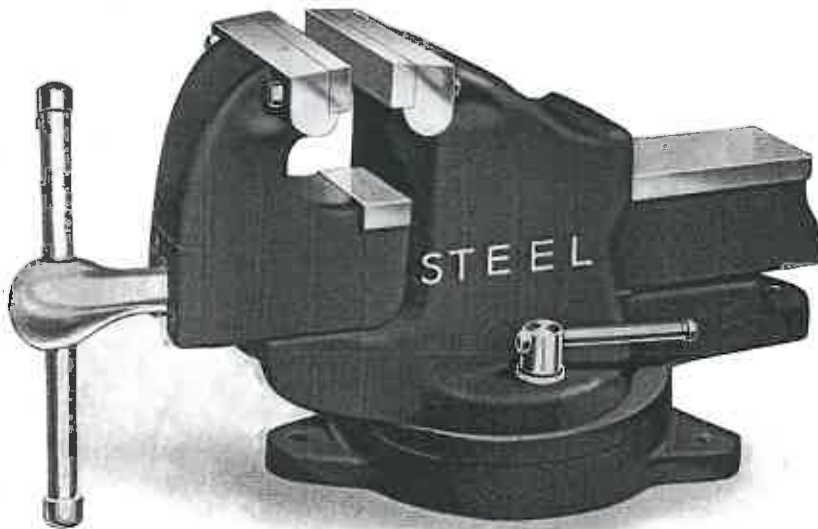
NOTE.—Unless Swivel Bases are specified, fixed bases, as pages 27 and 28 will be supplied.

Parkinsons

STEEL VISES

SCREW ACTION ONLY.

UNBREAKABLE IN USE.



For Vises on Fixed Bases see pages 27 and 28.

Parkinsons

"PERFECT" VISES FOR WOODWORKERS

CONTINUOUS SCREW AND QUICK ACTION.

The name "**Perfect**" was given to the original quick action combined with continuous screw Vise, patented by JOSEPH PARKINSON in 1884.

The screws and nuts have a special form of **Buttress Thread** with undercut faces. The nut is a half-nut which is normally meshed with the screw, and the grip is applied by turning the screw in the usual way. For quick movement of the sliding jaw the nut is withdrawn from the screw by means of the trigger alongside the knob of the screw, so that by the same movement the nut is withdrawn and the jaw moved to the required position. When the trigger is released the nut automatically re-engages the screw and the grip may be applied.

Hitherto the screws have been exposed so that sawdust, dirt, etc., that lodged on the threads of the screw was liable to be carried to and deposited in the threads of the nut, but the patented cover, which is a new feature, effectually prevents this happening, and by prolonging the life of these parts maintains the efficiency of the vise.

Vises may be had with or without the patented cover, but the slight extra cost of the cover is an excellent investment, strongly recommended.



Special Buttress-Thread Continuous-Screw and Corresponding Half-Nut,
as used in "Perfect" Vises.

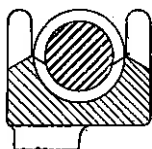
Parkinsons

"PERFECT" VISES FOR WOODWORKERS

CONTINUOUS SCREW AND QUICK ACTION.

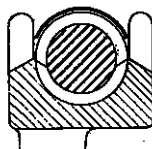
CONTINUED.

The cover is of sheet steel, semi-circular in form, extending over the full length of the threaded portion of the screw, so that sawdust, etc., can neither fall on the screw nor be carried into the nut.

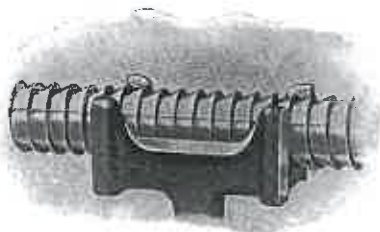


SECTION OF SCREW & NUT
WITHOUT COVER

Patent No. 292381-27.
(Made under License)



SECTION OF SCREW & NUT
WITH PATENTED COVER



Screw and nut without Cover.



Screw and nut with patent Cover.

The screws and nuts of vises that are not thus protected are liable to become clogged, especially when woods of a resinous nature are being worked, and this liability is increased when oil is used to lubricate the threads, because the oil collects the sawdust and deposits it in the threads of the half-nut, where it is compressed, so that finally the threads of the nut are filled and cease to function as intended.

This does not apply, however, to screws and nuts that are fitted with this patented cover. Sawdust can neither fall on the screw nor be carried into the nut.

These Vises have UNBREAKABLE STEEL SLIDES OR RUNNERS, which slide smoothly in drilled and reamed holes and give a parallel grip.

Parkinsons

"PERFECT" VISES FOR WOODWORKERS

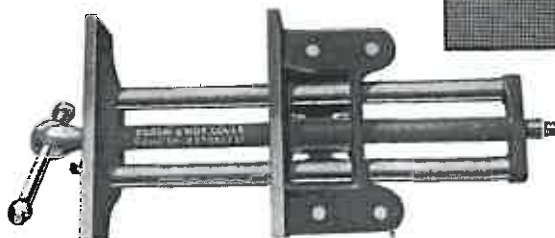
**CONTINUOUS SCREW AND QUICK ACTION.
WITH PATENTED COVER TO SCREW AND NUT.**

Patent No. 292381-27. Made under License.



**Note the Trade Mark
on the front jaw.**

These Vises have STEEL SLIDES or RUNNERS.



Vise viewed from above showing how completely the patented cover protects the screw and nut and prevents Saw-dust, Dirt, etc. from choking the threads.

Size No.	Width of jaw	Opening	Weight	Price with Patented Cover to Screw & Nut
14 C	7 ins.	8 ins.	20 lbs.	£ s. d. 1 4 0
15 C	9 "	13 "	32½ "	1 13 0
16 C	10½ "	15 "	36 "	1 16 0

**These Vises have continuous screw and quick action.
For plain screw vises without quick action, see pages 35-36.**

Parkinsons

"PERFECT" VISES FOR WOODWORKERS

CONTINUOUS SCREW AND QUICK ACTION.



**Note the Trade Mark
on the front jaw.**

These Vises have STEEL SLIDES or RUNNERS.



For Vises with Patented Cover to Screw and Nut see opposite page.

Size No.	Width of jaw	Opening	Weight	PRICE
14	7 Ins.	8 Ins.	19½ lbs.	£ s. d. 1 2 0
15	9 ..	13 ..	32 ..	1 10 0
16	10½ ..	15 ..	35½ ..	1 13 0

**These Vises have continuous screw and quick action.
For plain screw vises without quick action, see pages 35-36.**

Parkinsons

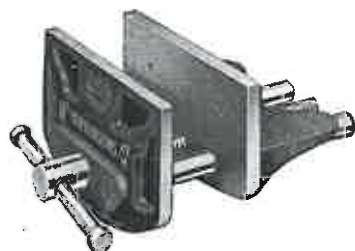
**"HANDY-
CRAFT"**

LIGHT PATTERN WOODWORKERS VISES

SCREW ACTION ONLY.

These Vises fill the needs of the 'Amateur' and the 'Handyman'

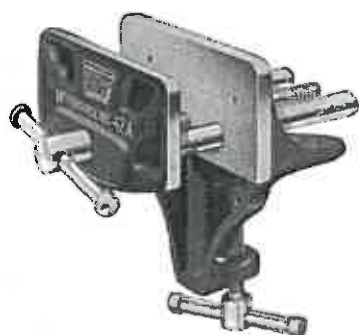
They have unbreakable steel slides or runners which slide smoothly in drilled and reamed holes, giving a parallel grip—and are fitted with steel screws.



No. 42

May be easily screwed to Bench or Table.

Width of Jaw	Opening	Weight	Price
6 ins.	4½ ins.	6 lbs.	7/6



No. 42A

Quickly secured to Bench, Table or Trestle by means of clamp. In addition to the clamp, screw holes are provided, so that the Vise may be fixed in a permanent position if desired.

Capacity of Clamp - ¾" to 2¼"

Width of Jaw	Opening	Weight	Price
6 ins.	4½ ins.	7½ lbs.	9/6



No. 43

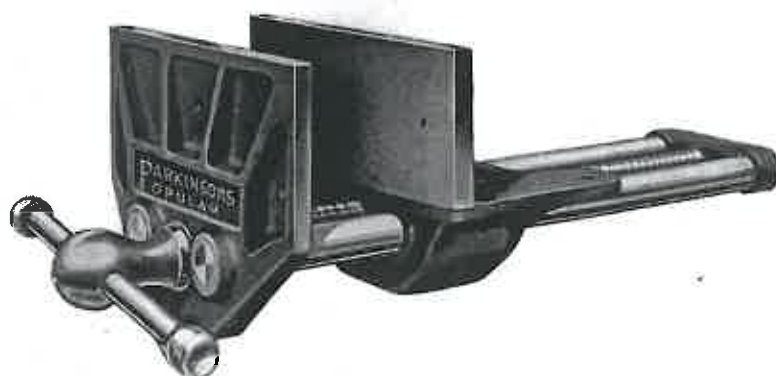
**EXTRAORDINARILY STRONG
AND SERVICEABLE**

Width of Jaw	Opening	Weight	Price
6 ins.	6 ins.	11½ lbs.	12/6

Parkinsons

VICES FOR WOODWORKERS

SCREW ACTION ONLY.



These **Vises** have **STEEL SLIDES** or **RUNNERS** and are fitted with square-thread Screw and solid Nut.

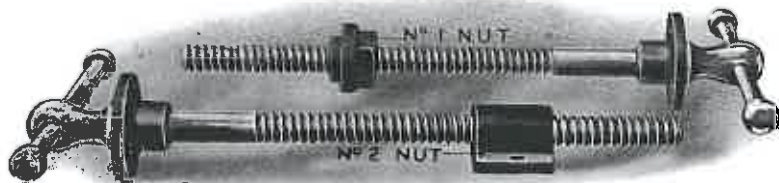
Size No.	Width of jaw	Opening	Weight	PRICE
44	7 ins.	8 ins.	18 lbs.	£ s. d. 1 1 0
45	9 „	13 „	31 „	1 9 0
46	10½ „	15 „	34 „	1 12 0

For “ **Perfect** ” Vises with continuous screw and quick action, see pages 31—34.

Parkinsons

IRON SCREWS FOR WOODEN VISES

Fitted with plate, collar, handle and
either No. 1 or No. 2 style Nut.



State style of nut desired.

Diameter of Screw	Total Length	PRICE each
$\frac{3}{4}$ ins.	11 ins.	£ s. d. 0 5 9
$\frac{7}{8}$ „	12 „	0 6 6
1 „	16 „	0 7 6
$1\frac{1}{8}$ „	18 „	0 9 0

WOODWORKERS' BENCH STOPS

THREE GOOD BENCH STOPS FOR WOODWORKERS' BENCHES.

All three are adjusted by hand without need for hammer or screw-driver.

THE "SIMPLE"

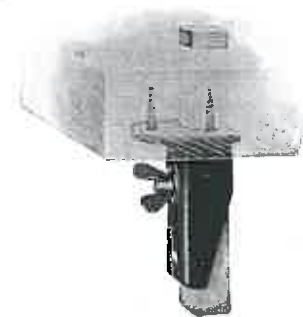
The illustration shows the construction with the stop piece in the "up" position. The stop piece which is of hardwood, $1\frac{1}{2} \times 1$ ", is easily removed for cleaning and easily renewed when worn out.

It passes through a hole cut in the Bench and is guided and clamped by the wing nut in an iron socket that is fixed on the underside of the Bench plank.

It is easily fixed.

There is no exposed metal to damage edge tools. This Stop is highly recommended by Manual Training Instructors, but it is **A GOOD STOP FOR ANY WOODWORKER'S BENCH.**

Price 3/-



THE "ACME"

All the metal-work is fixed on the underside of the Bench plank, and the wooden stop passes through a hole cut in the Bench.

A circular hole in the front board provides access to the wing-knob, by means of which the stop is moved up and down.

The stop piece is of hard wood, easily removed for cleaning and easily renewed when worn out.

This Stop is the invention of a Manual Training Instructor and **THERE IS NOTHING BETTER.**

Price 5/-

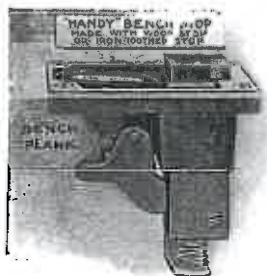


THE "HANDY"

The socket of this Stop is of Cast-Iron recessed in the top of the Bench, but notwithstanding the exposed metal-work, it is preferred by some journeymen because the wing-knob or thumb-screw by which the wooden stop piece is clamped and released is reached from the top of the Bench.

The stop piece is of hard wood, easily removed for cleaning and easily renewed when worn out.

Price 5/-



Parkinsons

CUT OUT WASTE AND LENGTHEN LIFE

TIME IS THE MOST PRECIOUS THING WE WASTE.

NEEDLESS JOURNEYS WASTE TIME.

**THESE PORTABLE VISE STANDS SAVE NEEDLESS
TRAMPING.**

Those who have experienced the annoyance of being compelled to walk say 100 yards in order to make a few strokes with a file at a Vise and then walk back again, and having to repeat the performance several times an hour, know that this is true.

These stands occupy little space, may be easily moved and placed just where most convenient to the workman.

Money is well spent on such equipment. It saves time, prevents fatigue and makes effort more productive.

To do without such equipment is extravagance—not economy.

An engineer's fitter is engaged for the skilled work he can do with his hands and not as a pedestrian.

Walking backwards and forwards may be good exercise for him, but is not profitable for his employer.

If you can use these stands and are not doing so, you are paying wages for walking, instead of working.

Parkinsons

PORTABLE VISE STAND OR BENCH

Size No. 1.



This **Stand** is intended for use in confined spaces, among Machines, Lathes, etc.

A rack is fitted for holding 8 files, also a Tray for small articles. The base serves as a shelf.

Top of Table	18 by 19 ins.
Height of Table	30 ins.
Weight, with Drawer	1 cwt.

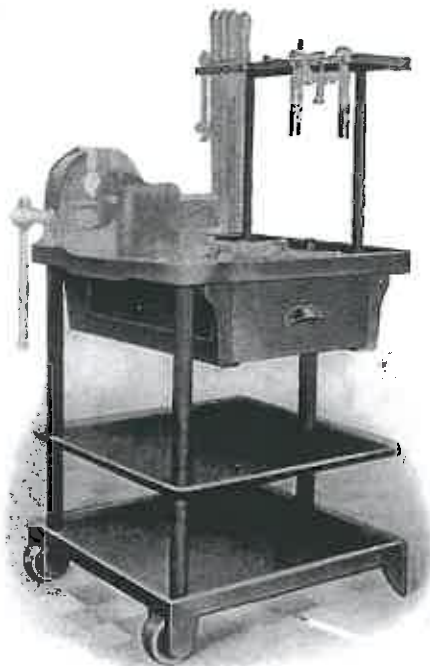
Price, with Drawer	£	s.	d.
„ without Drawer	2	5	0

Vise extra.

Parkinsons

PORTABLE VISE STAND OR BENCH

Size No. 2.



Three-Decker Portable Stand mounted on three wheels.

A rack is fitted for holding 10 files, also tray for small articles.

Table 24 ins. square.

Height of Table 30 ins.

Weight, with Drawer, 2 cwt., 2 qrs., 20 lbs.

			£	s.	d.
Price, with Drawer	6	10	0
„ without Drawer	5	10	0

Vise extra.

Parkinsons

PORTABLE VISE STAND OR BENCH

Size No. 4.



This **Stand** is of particularly rigid structure and is designed so that when tilted it may be easily wheeled from point to point, but when erect stands perfectly firm on three feet.

Table, approx.	21 ins. square.
Height	30 ins.
Weight	1½ cwt.

Price	£	s.	d.
				3	15	0

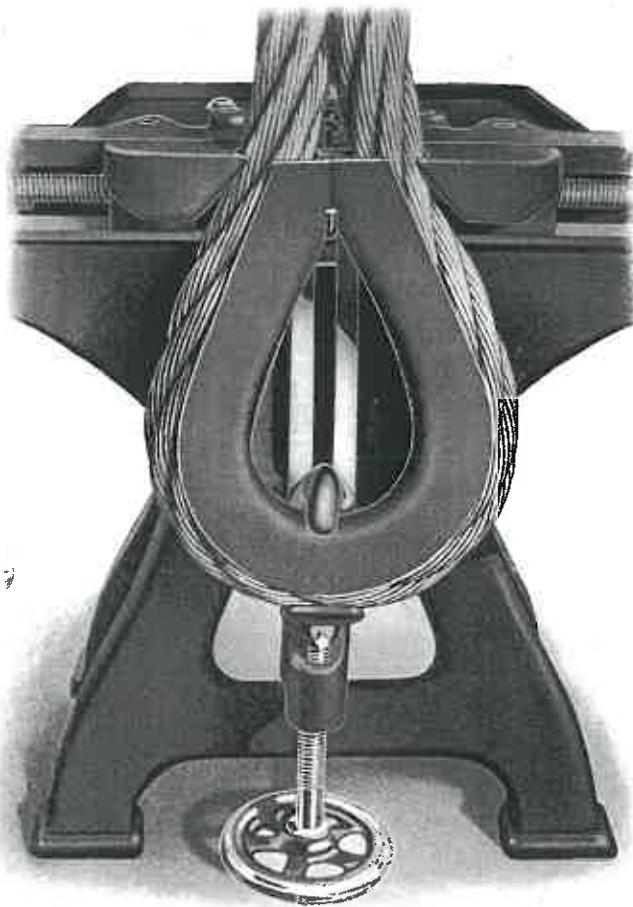
Vise extra.

Parkinsons

RIGGERS VISES

FOR SPLICING WIRE ROPES OR CABLES
MAKE

A HARD JOB—AN EASY ONE



By their use, cables may be quickly laid round and firmly set to thimbles
and held in position during the splicing operations.

This picture tells the story

RIGGERS SPLICING VISE—*continued.*

These Vises are made to withstand rough usage, and the bending jaws which are subject to the greatest strain are of malleable iron.

The following illustrations show how the cables are bent and held in position round the thimbles.

The procedure is as follows :—

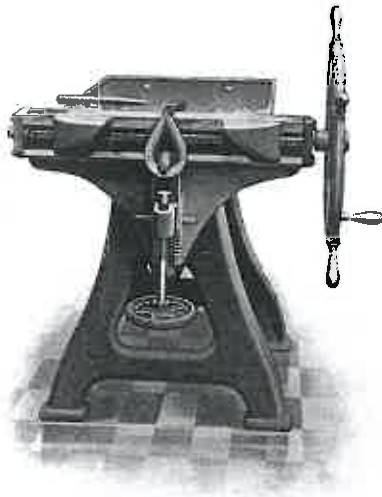


Fig 1.

The thimble is placed in position as shown by Fig. 1.

When dealing with large cables, it may be necessary to lower the thimble by unscrewing the vertical screw as the bending jaws close in.

By this method, the thimble is kept tight in the bent cable, and "lashing" or tying with hemp or wire is dispensed with, and there is a corresponding saving in time, force and material—and a better job.

The splicing operation is not hampered by the bending apparatus.

The larger sizes may be adapted for small ropes or cables by fitting loose caps on the bending jaws.

The Vise is mounted on a substantial Iron stand and may be fixed in the vertical position as shown by Figs. 1, 2 and 3, or if preferred, changed to the horizontal position shown by Fig. 4.

RIGGERS SPLICING VISE—*continued.*

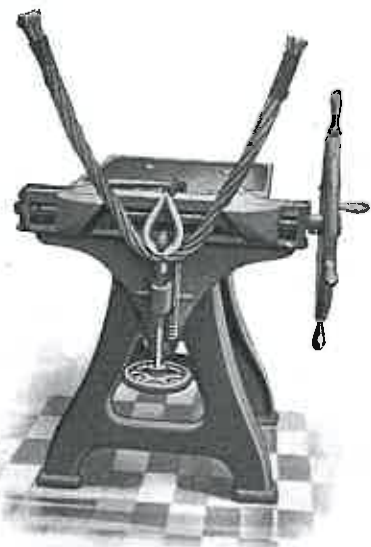


Fig. 2.

The rope or cable is then laid into the crown of the thimble and forced tightly against it by the vertical screw. Each end is then lifted over the bending jaws as shown by Fig. 2.

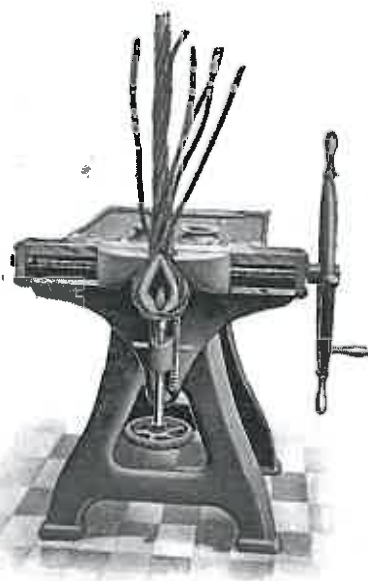


Fig. 3.

The bending jaws are then brought together by a right and left hand screw operated by the large hand wheel shown at the right. This movement presses the rope snugly into the groove of the thimble ready for splicing as shown by Fig. 3.



Fig. 4.

Parkinsons

RIGGERS SPLICING VISE—continued.

The No. 4 size shown by Fig. 5 has been designed for cables up to $3\frac{1}{2}$ -in. dia., and is very powerful.

The principle is the same as in the smaller sizes, but the Vise is fixed in an inclined position, and by means of the long levers which operate the bending jaws for the final grip, great pressure can be exerted.

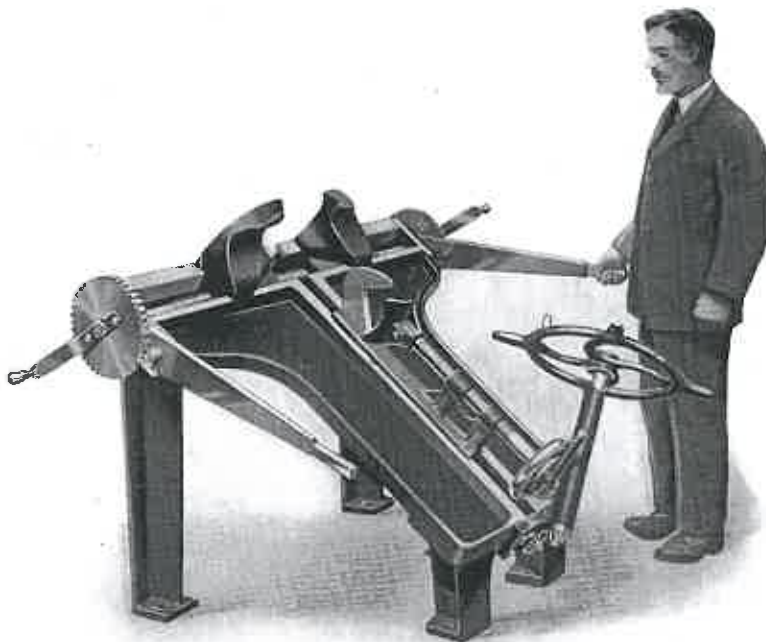


Fig. 5.

Size.	No. 1	No. 2	No. 4
To suit cable ...	$\frac{5}{8}$ -in.- $1\frac{1}{2}$ -in. dia.	1-in.- $2\frac{1}{2}$ -in. dia.	2-in.- $3\frac{1}{2}$ -in. dia.
Weight ...	336 lbs.	530 lbs.	1150 lbs.

Prices on application.

Parkinsons

MILLING MACHINE OR TOOL MAKERS VISES

THESE VISES ARE MADE FROM STEEL CASTINGS.

The Jaw-plates, which are of Chrome Crucible Cast Steel, oil-hardened and ground, are easily removable and may be replaced by Jaws shaped for special purposes.

The tongue pieces in the Bases are reversible, and will fit slots $\frac{5}{8}$ -in. and $\frac{3}{4}$ -in. wide, but may be made for any other size to order.

The Swivel Base is graduated for angular settings, and detachable, so that the Swivel Base Vises may be used either as Plain Base or Swivel Base, as desired.



PLAIN BASE.

Size No.	Width of Jaw	Depth of Jaw	Opening	Total Height	Weight	PRICE
22	5 ins.	1½ ins.	3 ins.	4⅞ ins.	39 lbs.	on application
23	6 "	1½ "	3¾ "	4¼ "	52 "	
24	7½ "	2 "	5½ "	5⅞ "	105 "	

SWIVEL BASE.

Size No.	Width of Jaw	Depth of Jaw	Opening	Total Height	Weight	PRICE
25	5 ins.	1½ ins.	3 ins.	5⅞ ins.	55 lbs.	on application
26	6 "	1½ "	3¾ "	6⅞ "	72 "	
27	7½ "	2 "	5½ "	7⅞ "	136 "	

Parkinsons

"XL" & "NL" MACHINE VISES

These strong **Cast Iron Vises** are stocked in a range of standard sizes as listed.

They are reasonable in price and unsurpassed in quality.

All essential details for the promotion of long life and hard service have been considered.

If accuracy and dependability be needed, these Vises will serve Users to their satisfaction.

If there is not a suitable size in the list, please send details of what be required for other sizes may be made at short notice.

These Vises may be supplied in steel—prices on application.

WHEN SUBJECT TO HEAVY DUTY

These Vises should be firmly bolted or clamped by the **side flanges** of the base, to the Machine table.

The **end flanges** are provided as an additional convenience but if secured only at the ends, the act of tightening the screw which applies the grip to the jaws may "spring" the base thus affecting accuracy, rigidity and the risk of breakage.

Some of the bases have plain side flanges for which clamp plates and bolts may be used. Other bases have slots, thus permitting bolts only, or clamp plates and bolts, to be used as may be most convenient.

"NL" (or No Lift) MACHINE VISES

These Vises are suitable for use on Planing, Shaping, Milling, and Drilling Machines.

These vises hold fast and do not "lift" or displace the work when the grip is applied. They are quickly adjusted, and being light in proportion to their strength, are appreciated by the workmen.

They have very few parts, are simple in construction, will remain reliable and accurate, but if by long usage they become worn, the original accuracy may be restored by replanning the upper and lower surfaces of the bed, so that both faces are parallel, without need for any other adjustment.

The loose jaw swivels and allows taper or irregular pieces to be securely held.

The action of clamping the work exerts a downward pressure on the loose jaw, and "lifting" is absolutely prevented, and the jaw plates being fixed, dirt and cuttings cannot get behind them.

SIZES AND PRICES.

Width of Jaw ...	Ins.	3	4	5	6	7	8	10	12
Depth of Jaw ...	"	1 $\frac{1}{8}$	1 $\frac{1}{4}$	1 $\frac{1}{2}$	2	2	2 $\frac{1}{4}$	2 $\frac{1}{2}$	2 $\frac{3}{4}$
Opening ...	"	7	9	11 $\frac{1}{2}$	14	18	20	24	30
Length overall ...	"	16 $\frac{3}{4}$	19 $\frac{5}{8}$	23	27 $\frac{5}{8}$	33	36 $\frac{3}{4}$	42 $\frac{1}{4}$	49 $\frac{1}{4}$
Width overall ...	"	6 $\frac{1}{4}$	8	9	10 $\frac{1}{2}$	12	13	15	17
Total Height ...	"	3	3 $\frac{3}{8}$	3 $\frac{1}{2}$	4 $\frac{1}{4}$	4 $\frac{3}{4}$	5 $\frac{1}{2}$	5 $\frac{3}{4}$	6 $\frac{3}{8}$
No. of Slots in Base ...		6	6	6	6	6	6	8	8
Size of Slots in Base		$\frac{5}{8}$	$\frac{5}{8}$	$\frac{5}{8}$	$\frac{3}{4}$	$\frac{7}{8}$	$\frac{7}{8}$	$\frac{7}{8}$	$\frac{7}{8}$
Approx. Weight ...	lbs.	24	36	52	81	122	162	236	355
Prices ...		48/-	58/-	80/-	100/-	125/-	150/-	200/-	283/-

The "NL" Machine Vises are confidently recommended.

When ordering it is sufficient to state width of jaw.

Parkinsons

"NL" (OR NO LIFT) MACHINE VISES



Fig. 1.—In parts.



Fig. 2.—Ready for use.

The extreme simplicity of the construction is shown by Figs. 1 and 2. Fig. 1 shews the vise in parts, and Fig. 2 shews it assembled, ready for use.

Parkinsons

"XL" MACHINE VISES WITH RETIRING JAWS

This is a popular model of Machine Vise for use on Planing, Shaping, Milling and Drilling Machines.

The loose jaw swivels and allows taper or irregular pieces to be securely held.

The jaw plates are of the retiring or pull down type, and move downwards as the pressure is applied by the clamping screws.

Thus the tendency of the loose jaws to lift and throw the work out of level is counteracted by the downward movement of the jaw plates, and the work is kept down on its packing strips or on the machined upper face of the base of the vise.

The Clamping Screws in the smaller sizes have holes drilled in the heads for a lever pin, but the larger sizes have hexagon heads and a steel box wrench to fit.

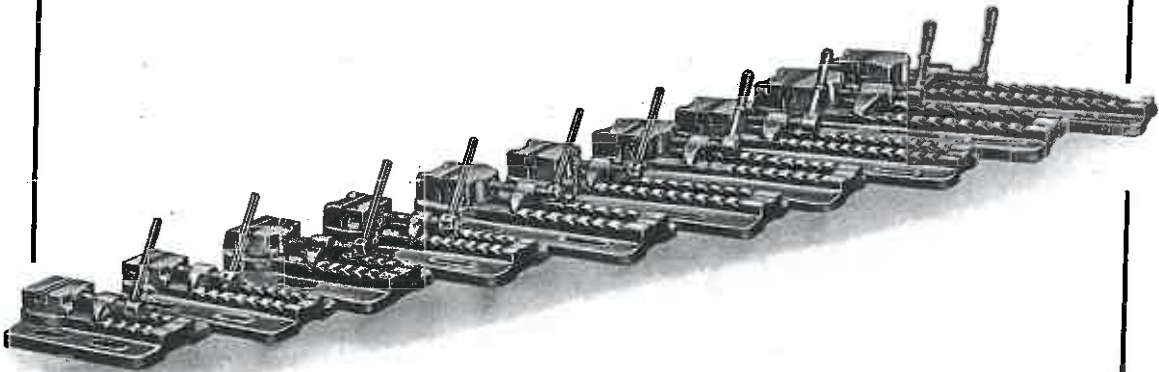
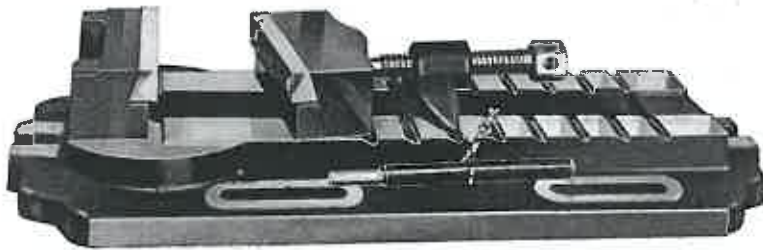
SIZES AND PRICES.

Width of Jaw Ins.	3	3	4	4	5	5	6	6	8	8
Depth of Jaw ..	1 $\frac{1}{4}$	1 $\frac{1}{2}$	1 $\frac{1}{2}$	1 $\frac{1}{2}$	2	2	2 $\frac{1}{4}$	2 $\frac{1}{4}$	2 $\frac{1}{2}$	2 $\frac{1}{2}$
Opening	4 $\frac{1}{2}$	7 $\frac{1}{8}$	5	7 $\frac{1}{8}$	9 $\frac{1}{2}$	12 $\frac{1}{2}$	12 $\frac{1}{2}$	16	32 $\frac{1}{2}$	36 $\frac{1}{2}$
Length overall ..	14	17	17	19 $\frac{1}{2}$	22 $\frac{1}{2}$	25 $\frac{1}{2}$	25 $\frac{3}{4}$	29 $\frac{1}{2}$	32 $\frac{1}{2}$	36 $\frac{1}{2}$
Width overall ..	7 $\frac{1}{8}$	7 $\frac{1}{8}$	8 $\frac{5}{8}$	8 $\frac{5}{8}$	9 $\frac{1}{2}$	9 $\frac{1}{2}$	11	11	13	13
Total Height ..	2 $\frac{7}{8}$	2 $\frac{7}{8}$	3 $\frac{3}{8}$	3 $\frac{3}{8}$	4 $\frac{1}{8}$	4 $\frac{1}{8}$	4 $\frac{3}{8}$	4 $\frac{3}{8}$	4 $\frac{7}{8}$	4 $\frac{7}{8}$
No. of slots in base	4	4	4	4	4	4	4	6	6	6
Size of slots in base ... Ins.	$\frac{5}{8}$	$\frac{5}{8}$	$\frac{5}{8}$	$\frac{5}{8}$	$\frac{5}{8}$	$\frac{5}{8}$	$\frac{5}{8}$	$\frac{5}{8}$	$\frac{7}{8}$	$\frac{7}{8}$
Approx. wgt. lbs.	24	27	40	44	72	78	96	110	165	175
Prices	47/-	54/-	64/-	67/-	92/-	97/-	107/-	117/-	165/-	175/-

When ordering state width of jaw, opening.

Parkinsons

"XL" MACHINE VISES
WITH RETIRING JAWS



Parkinsons

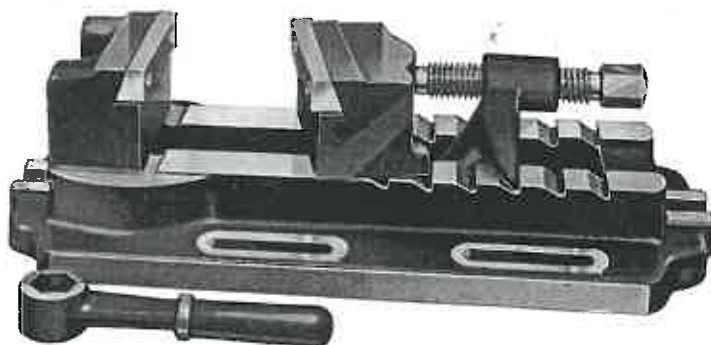
"XL" DEEP JAW MACHINE VISES **EXTRA HEAVY TYPE.**

These Vises are designed for extra heavy duty on Planing and Shaping Machines, etc.

The jaw plates are of the "Retiring" or "Pull down" type.

The loose jaw swivels for taper or irregular work.

The clamping screw is of large diameter and has hexagon head, and a steel box wrench is provided for screwing up.



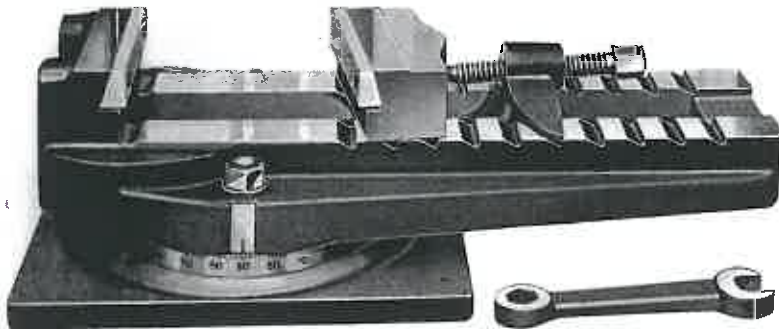
SIZES AND PRICES.

Width of Jaw	Ins.	5	6	8	10
Depth of Jaw	"	3	3 $\frac{1}{2}$	4	4
Opening	"	7	9	12	14
Length Overall	"	21 $\frac{1}{2}$	23 $\frac{1}{2}$	30	32 $\frac{1}{2}$
Width Overall	"	9 $\frac{1}{2}$	11 $\frac{3}{8}$	13	15 $\frac{1}{8}$
Total Height	"	5 $\frac{5}{8}$	6 $\frac{1}{4}$	7	7
No. of Slots in Base	"	4	4	4	4
Size of Slots in Base	ins.	$\frac{5}{8}$	$\frac{3}{4}$	$\frac{7}{8}$	$\frac{7}{8}$
Approx. Weight	lbs.	88	120	193	276
Prices		104/-	120/-	184/-	230/-

When ordering specify "Deep Jaw" and state width of jaw.

Parkinsons

"XL" SWIVEL BASE MACHINE VISES



These Vises have jaw plates of the "Retiring" or "Pull down" type

The bases are grooved to receive guide strips to fit the slots in machine tables.

The Vises will swivel completely round and the bases are graduated in degrees.

With each vise is furnished a double ended wrench, one end of which is of box form to fit the head of the gripping screw, and the other end fits the bolts in the base. This is much better than using a tommy bar in holes drilled in the head of the screw. **The Vises are very massive, as may be seen from the weights.**

SIZES AND PRICES.

Width of Jaw	ins.	5	6	8
Depth of Jaw	"	2	2½	2½
Opening	"	9½	12	16
Size of Base	"	12½ x 10	13½ x 11	16½ x 14
Length Overall	"	19½	22¾	28½
Total Height	"	6¾	6¾	7¾
Approx. Weight	lbs.	102	139	254
Prices	144/-	160/-	260/-

When ordering specify "Swivel Base" and state width of jaw.

Parkinsons

THE 4 WAY OR LIFT PULL PUSH CRAMP JACKS

Originally known as "PHIPPS' PATENT JACKS."

The many uses to which these jacks may be put render them invaluable to Engineers for lifting, pulling and pushing, when erecting, taking down, or repairing machinery, raising and putting in position shafts and heavy pieces, and adjusting for inserting bolts and screws, etc.

They may be used in confined spaces which will not admit lifting blocks, to lift and hold in suspension crank shafts, cylinder covers, bearings, etc., by passing chain or rope round the lugs, and below the piece to be lifted.

To PIPE FITTERS.—For breaking joints or for pulling up long stretches of pipes.

To MASONS.—For stone fixing and lifting, used as a lewis.

To BUILDERS.—For lifting roofs, girders, walls for underpinning.

To CONTRACTORS.—For bridge and pier building, strutting earth when tunnelling, etc.

To SHIP BUILDERS.—For both new work and repairs generally.

They will Cramp and hold many articles for Boring or Drilling, and are also most handy for Straining Fencing Wire, Rope, etc.

The Screw has Right-hand thread at one end and Left-hand thread at the other end, both ends being solid with the centre block, to which the spanner or tommy bar is applied to work the jack.

The Heads are malleable, and the hooks and lugs formed thereon enable these jacks to be used for many purposes for which ordinary jacks are useless.

They are made in two styles: one to work by Ratchet, and one to work by ordinary Spanner or Tommy. Prices of the latter do not include Spanner or Tommy, which customers usually provide for themselves.

Numerous testimonials confirm the advantages claimed for these 4-Way Jacks.

The first two sizes weigh 3 lbs. and $4\frac{1}{2}$ lbs. respectively, and Mechanics who have used them declare the smaller sizes to be essential to every workman's kit, enabling heavy weights to be tackled, single-handed, with ease.

Sizes A to H inclusive are worked by Spanner or Tommy.

Size	Height in inches when down	Diam. of Screws	To Lift in Tons	Wght. lbs.	Price.
A	6	$\frac{7}{8}$	1	3	7/-
B	8	1	1	$4\frac{1}{2}$	9/-
C	10	$1\frac{1}{2}$	$1\frac{1}{2}$	$9\frac{1}{2}$	14/6
D	12	$1\frac{3}{4}$	2	$13\frac{1}{2}$	20/-
E	14	$1\frac{3}{4}$	4	$23\frac{1}{2}$	28/-
F	16	2	6	$34\frac{1}{2}$	38/-
G	18	$2\frac{1}{4}$	8	$43\frac{1}{2}$	50/-
H	20	$2\frac{1}{2}$	10	65	69/-

Spanner or Tommy extra.

Sizes J and K are worked by Ratchet.

Size	Height in inches when down	Diam. of Screws	To Lift in Tons	Wght. lbs.	Price
J	10	$1\frac{1}{2}$	$1\frac{1}{2}$	$11\frac{1}{2}$	24/-
K	14	$1\frac{3}{4}$	4	$26\frac{1}{2}$	42/-

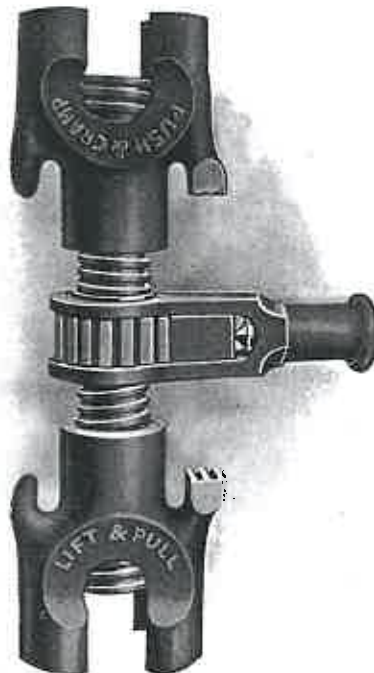
Parkinsons

THE 4 WAY OR | | |-------| | LIFT | | PULL | | PUSH | | CRAMP | JACKS

Originally known as "PHIPPS' PATENT JACKS."



Screw worked up or down
by Spanner or Tommy.
Sizes A to H.



Screw worked up or down
by Ratchet.
Sizes J and K.

Parkinsons

RIGIDITY IN VISES

Rigidity in Vises is the most necessary feature.

Good work cannot be done without it.

A vise that is not rigid, vibrates and wastes the strength of the worker.

If there is spring or recoil in the vise, part of every blow struck, and of every stroke of the file, is wasted.

If you doubt this, hit a steel spring with a hammer and note the result.

Rigidity in a vise is obtained by the use of the right metal, in sufficient quantity or mass, properly distributed.

Rigidity is further increased by careful fitting of parts, which adds considerably to the length of service.

When selecting a Vise, thought should be given to this subject, for **Rigidity** affects the quantity and quality of the work performed on the object held.

"The wise Selection of Equipment" is the **"Selection of Equipment that will last."**

The satisfactory remedy is to select **"Vises by Parkinsons,"** for all our models have been carefully designed to give maximum **"Rigidity"** and **"Service."**

It is the application of the accumulated experience of over 50 years that has made them so convincingly superior.

Parkinsons

ADVICE TO USERS OF VISES

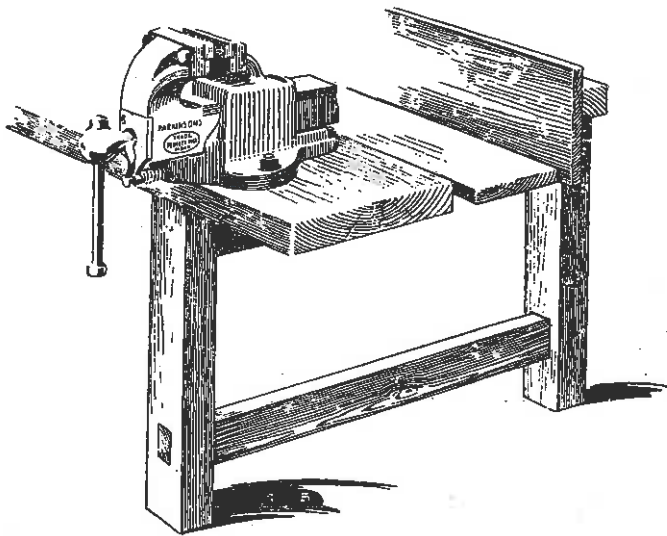
It will pay you to get one big enough.

A size too large is better than one too small, because it has more "mass," and "mass" is one of the most important qualities in a vise. (See remarks on Rigidity on opposite page.)

Don't neglect your vise, but treat it as a friend. Clean and lubricate the working surfaces, give regular care and you will get good service in return.

A good vise well used and cared for is one of the cheapest and best investments.

Don't mount a good vise on a flimsy bench, but see that the vise is on a substantial mounting.



This list supersedes all previous lists.

ST VV. 4.

INDEX.

	Page
Bench Screws	37
Bench Stops ("Acme," "Handy" and "Simple")	38
BENCH VISES.	
Ball Base Vise	13
"Handy" (Screw action only) on fixed base	7-8
" " " " on swivel base	9-12
"Perfect" Model F (Cast Iron) on fixed base	17-18
" " " " on swivel base	23-24
" " " " with swivel jaw	21
"Perfect" Model J (Steel) on fixed base	19-20
" " " " swivel base	25-26
Swivel Bases only for Models F and J Vises	22
Steel Vises (Screw action only) on fixed base	27-28
" " " " on swivel base	29-30
"Perfect" Vises for Woodworkers, with patented Cover to Screw and Nut	31-33
"Perfect" Vises for Woodworkers	34
Vises for Woodworkers (Screw action only)	35-36
JACKS (4-Way, also known as "Phipps")	55-56
MACHINE VISES.	
Milling Machine Vises	47
NL or No Lift	49-50
XL with retiring jaws	51-52
XL extra heavy, deep jaw	53
XL with swivel base	54
PORTABLE VISE STANDS or BENCHES	40-42
RIGGERS SPLICING VISES	43-46

COPYRIGHT:
J. PARKINSON & SON.
SHIPLEY.