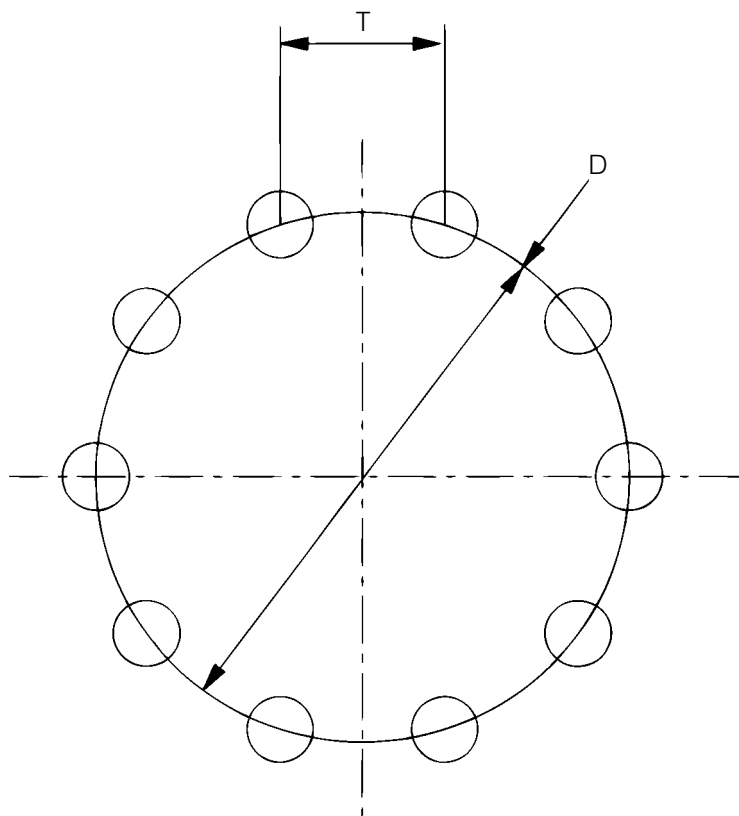


## PITCH CIRCLE CHORDAL DISTANCE CALCULATION



To obtain the chordal distance T the following formula is used:

$$T = D \times C$$

where: D = diameter of the pitch circle  
 C = constant as given in tables

Number of Holes	Constant 'C'
3	0.86603
4	0.70711
5	0.58779
6	0.50000
7	0.43388
8	0.38268
9	0.34202

Number of Holes	Constant 'C'
10	0.30902
11	0.28173
12	0.25882
13	0.23932
14	0.22252
15	0.20791
16	0.19509

Number of Holes	Constant 'C'
17	0.18375
18	0.17365
19	0.16459
20	0.15643
21	0.14904
22	0.14231
23	0.13617

Number of Holes	Constant 'C'
24	0.13053
25	0.12533
26	0.12054
27	0.11609
28	0.11196
29	0.10812
30	0.10453