

# PRO-TOOLS

7616 INDUSTRIAL LANE TAMPA, FL. 33637  
 TEL. (813) 986-9000 FAX (813) 986-5607  
 EMAIL: SALES@PRO-TOOLS.COM

TITLE: **HARDWARE LIST**

DWG. NO. **HMP-200-HD**

SHEET: **1 of 2**

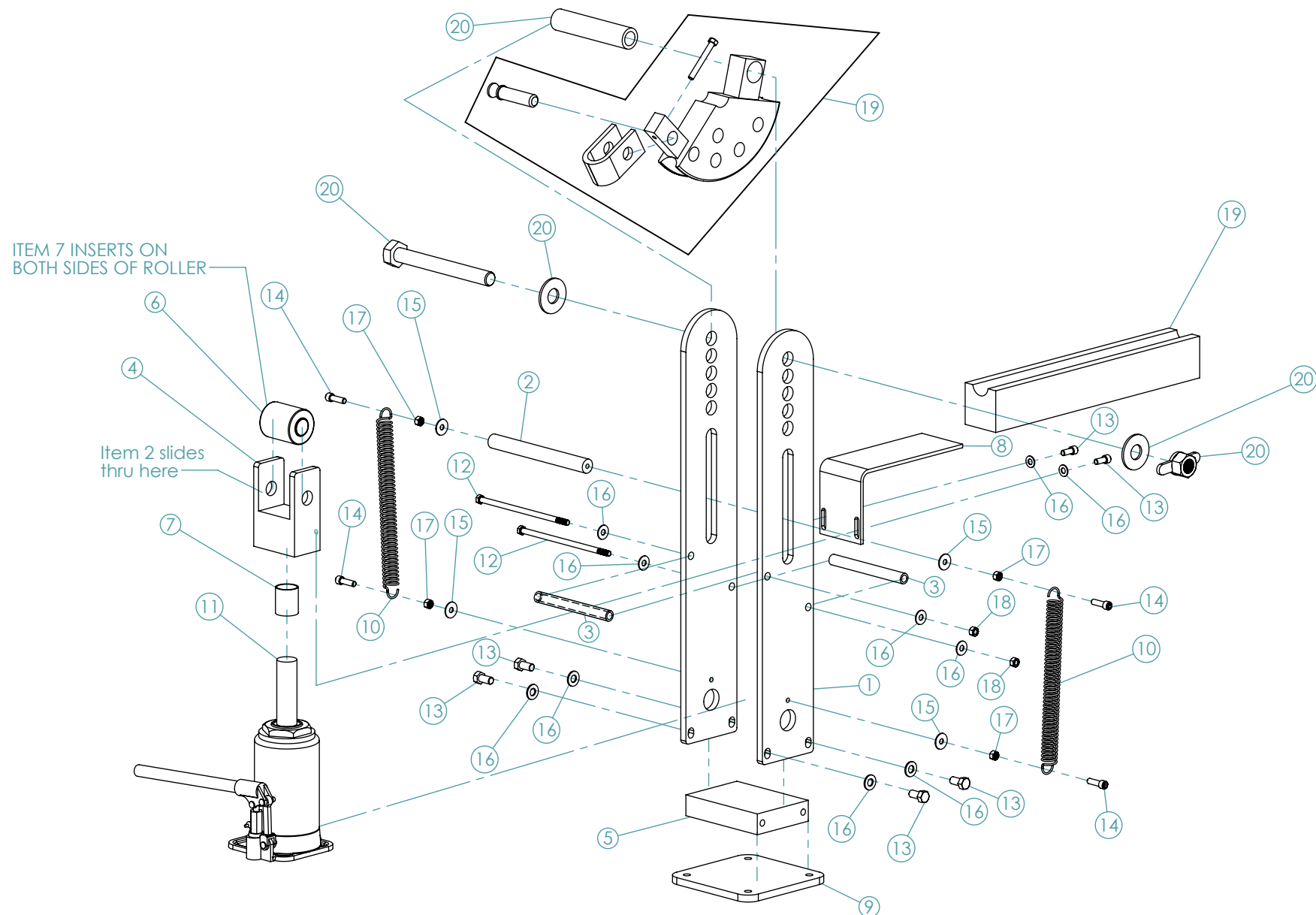
REV:

DRAWN  
**JODY**

MATERIAL

--

SCALE:  
**1/5**



# PRO-TOOLS

7616 INDUSTRIAL LANE TAMPA, FL. 33637  
 TEL. (813) 986-9000 FAX (813) 986-5607  
 EMAIL: SALES@PRO-TOOLS.COM

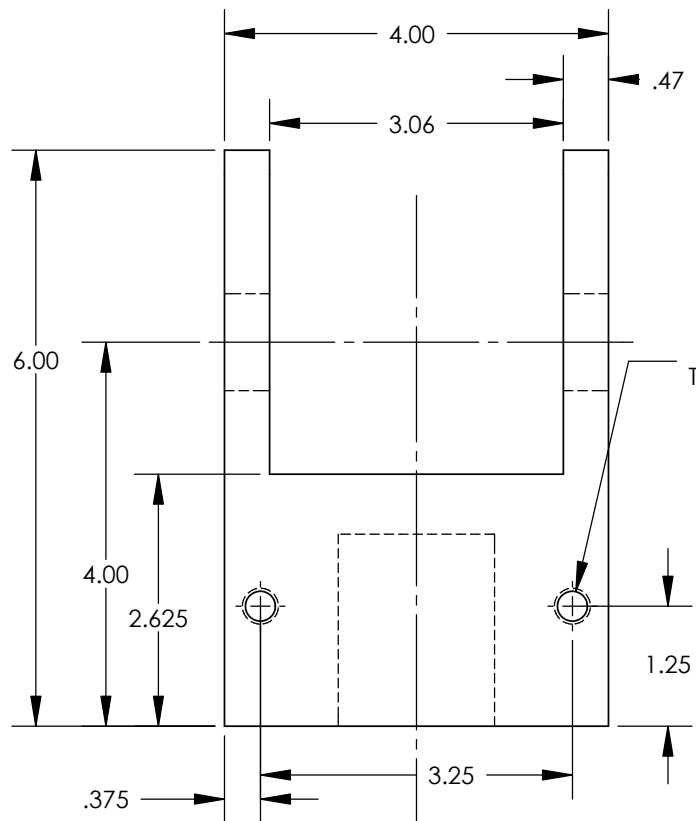
TITLE: HMP-200K Exploded			
DWG. NO.	HMP-200K	SHEET:	1 of 1
DRAWN	J.A.H.	MATERIAL	--
			SCALE: 1/10

# HMP-200 KIT

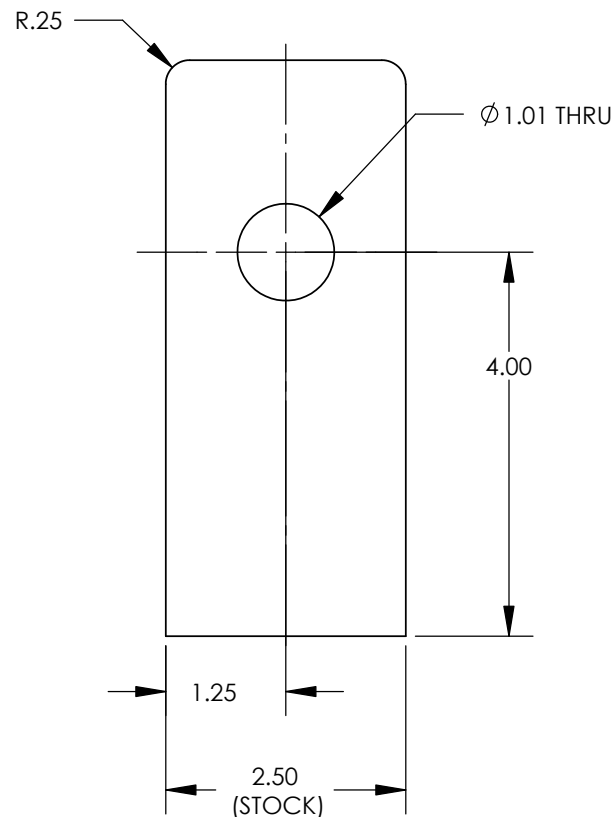
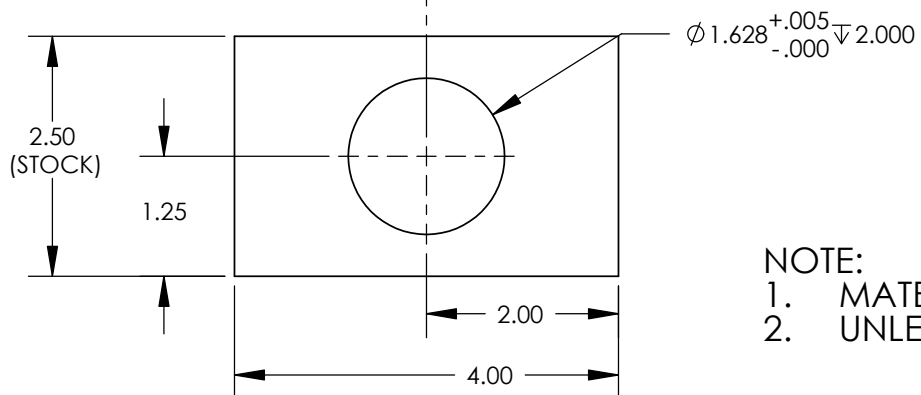
## BILL OF MATERIALS

<i>ITEM #</i>	<i>PART #</i>	<i>DESCRIPTION</i>	<i>QUANTITY</i>	<i>TOTAL COST</i>
1	HMP-200-010	SIDE BRACKETS	2	<b>\$125.00 ea</b>
2	HMP-200-05	ROLLER PIN	1	<b>\$20.00</b>
3	HMP-200-04	STABILIZER TUBE	2	<b>\$4.00 ea</b>
4	HMP-200-09	ROLLER BLOCK	1	<b>\$98.00</b>
5	HMP-200-08	BASE PLATE	1	<b>\$35.00</b>
6	HMP-200-02	ROLLER	1	<b>\$75.00</b>
7	HMP-200-01	SPACER SLEEVE	1	<b>\$10.00</b>
8	HMP-200-011	SUPPORT BRACKET	1	<b>\$29.00</b>
9	MB-105-210	STAND PLATE	1	<b>\$25.00</b>
10	SPRING	.110 SPRING	2	<b>\$10.00 ea</b>
11	HMP-JACK	20 TON BOTTLE JACK	1	<b>\$69.00</b>
12	BOLT 2	1/2-20x9 HEX BOLT	2	<b>\$2.99 ea</b>
13	BOLT 3	1/2-20x1" HEX BOLT	4	<b>\$0.79 ea</b>
14	BOLT 4	3/8-16-1.25 SHCS	4	<b>\$0.69 ea</b>
15	WASH2	3/8 SAE FLAT WASHER	4	<b>\$0.10 ea</b>
16	WASH3	1/2 SAE FLAT WASHER	8	<b>\$0.12 ea</b>
17	NUT1	3/8-16 HEX NUT	4	<b>\$0.18 ea</b>
18	NUT2	1/2-20 NYLON LOCK NUT	2	<b>\$0.45 ea</b>
19	OPT	DIE SET w/ Follow Bar		<b>see die cost</b>
20	TOP PIVOT SHAFT ASSEMBLY	1"-8 HEX NUT w/ SPIN TAB	1	<b>\$35.00</b>
		1"-8x9" HEX BOLT	1	
		1" SAE FLAT WASHER	2	
		DIE WRIST PIN SLEEVE	1	





2X DRILL  $\phi .312 \nabla 1.00$   
TAP 3/8-16 UNC - 2B  $\nabla .625$



NOTE:

1. MATERIAL: 6061-T6 ALUMINUM
2. UNLESS OTHERWISE SPECIFIED, ALL DIMENSIONS ARE TO BE  $\pm .005$

**PRO-TOOLS**

7616 INDUSTRIAL LANE TAMPA, FL. 33637  
TEL. (813) 986-9000 FAX (813) 986-5607  
EMAIL: SALES@PRO-TOOLS.COM

TITLE:

**ROLLER BLOCK**

DWG. NO.

**HMP-200-09**

SHEET:

**1 of 2**

REV:

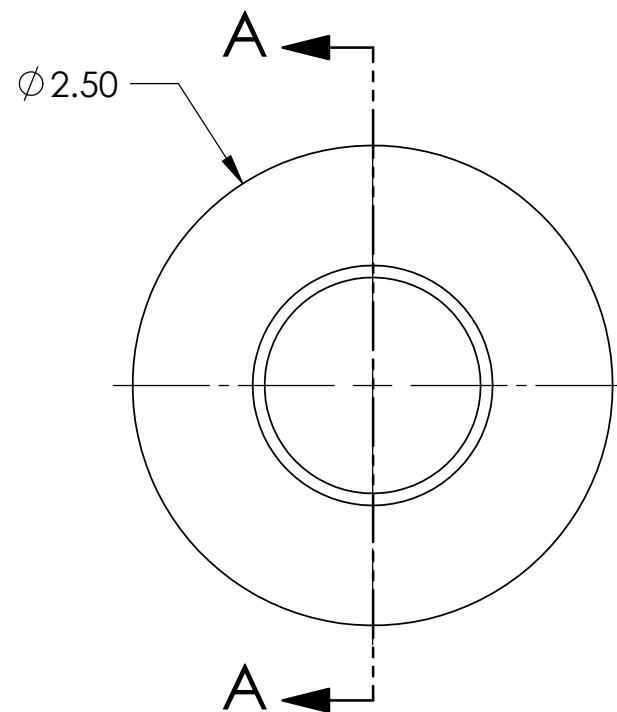
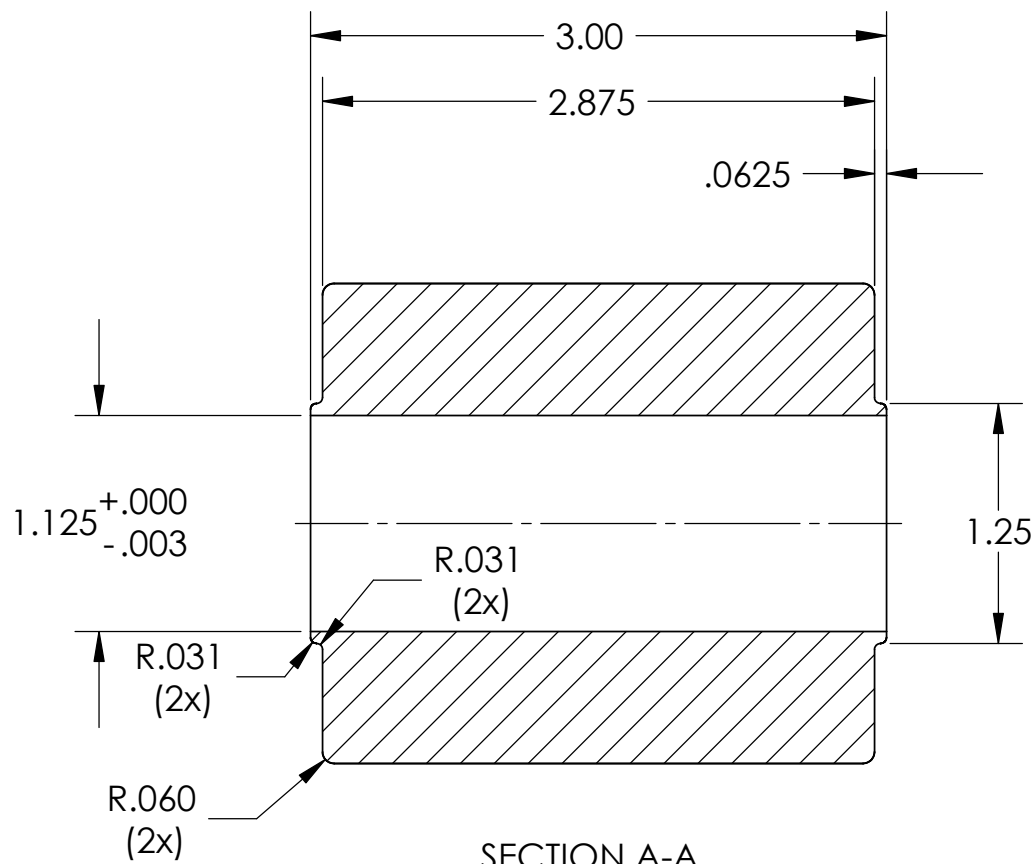
DRAWN  
**JODY**

MATERIAL

**6061-T6**

SCALE:

**1/2**

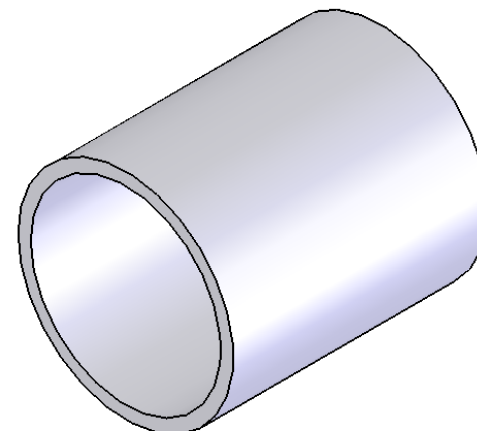
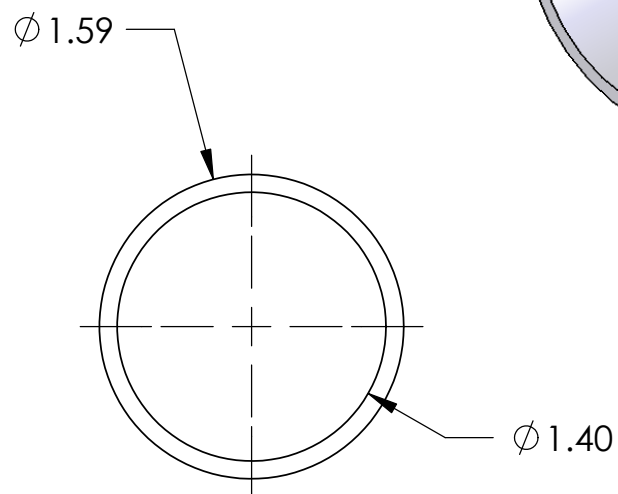
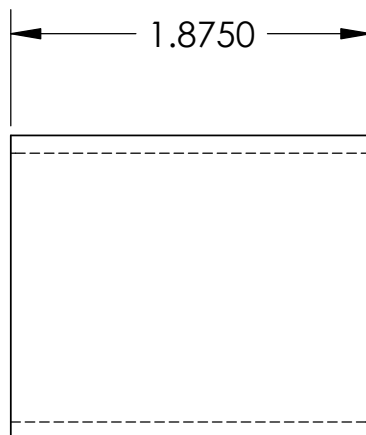


**PRO-TOOLS**  
 7616 INDUSTRIAL LANE TAMPA, FL. 33637  
 TEL. (813) 986-9000 FAX (813) 986-5607  
 EMAIL: SALES@PRO-TOOLS.COM

TITLE: <b>ROLLER</b>		
DWG. NO. <b>HMP-200-02</b>	SHEET: <b>1 of 2</b>	REV:
DRAWN <b>JODY</b>	MATERIAL <b>LEDLOY STEEL</b>	SCALE: <b>1/1</b>

**MATERIAL:**

1.625 O.D. x 1.375 I.D. ROUND MECHANICAL TUBE D.O.M.



**PRO-TOOLS**

7616 INDUSTRIAL LANE TAMPA, FL. 33637  
TEL. (813) 986-9000 FAX (813) 986-5607  
EMAIL: SALES@PRO-TOOLS.COM

TITLE:  
**SPACER SLEEVE-SHIPPING**

DWG. NO.  
**HMP-200-001**

SHEET:  
**1 of 2**

REV:

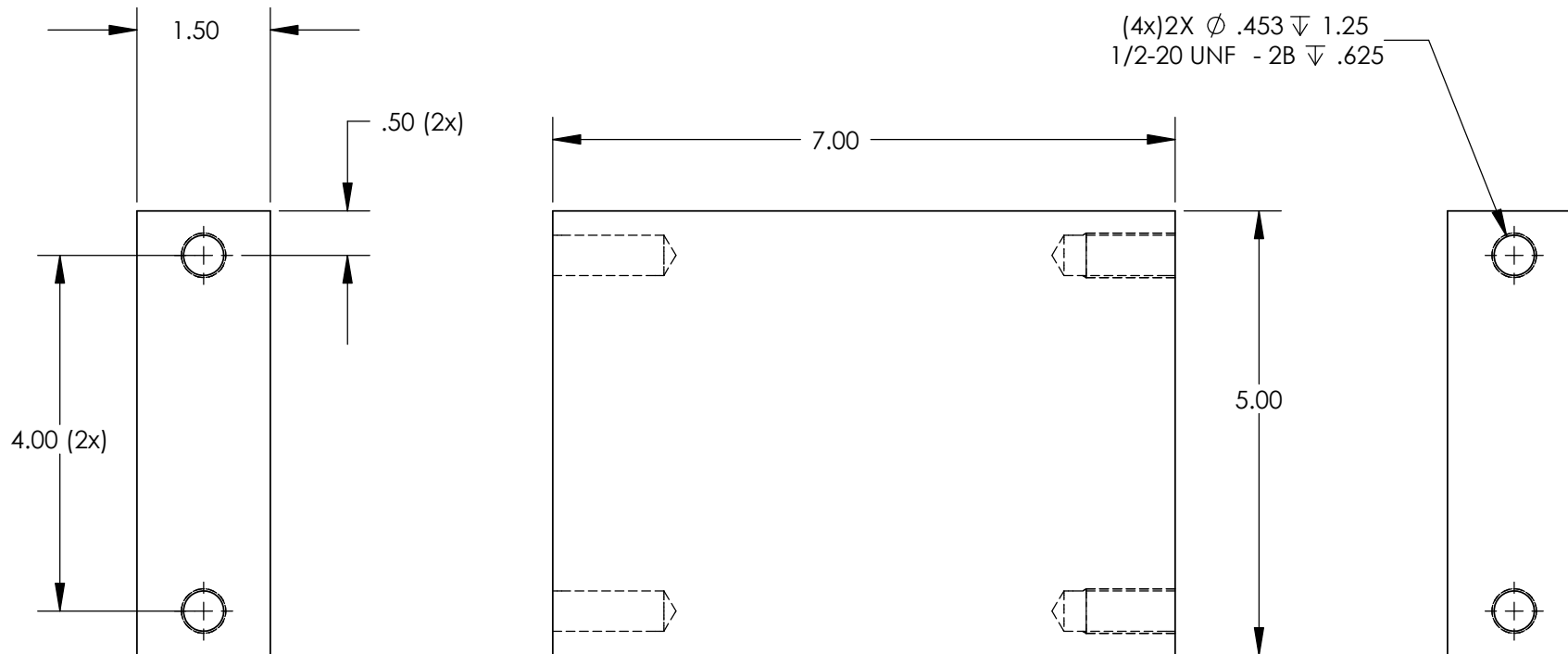
DRAWN  
**JODY**

MATERIAL  
**RD. MECH. TUBE**

SCALE:  
**1/1**

**NOTE:**

1. MATERIAL: 1018 C.R. STEEL 1 1/2" PLATE
2. UNLESS OTHERWISE SPECIFIED,  
ALL DIMENSIONS TO BE  $\pm .005$

**PRO-TOOLS**

7616 INDUSTRIAL LANE TAMPA, FL. 33637  
TEL. (813) 986-9000 FAX (813) 986-5607  
EMAIL: SALES@PRO-TOOLS.COM

TITLE:

**BASE PLATE**

DWG. NO.

**HMP-200-08**

SHEET:

**1 of 2**

REV:

**A**DRAWN  
**JODY**

MATERIAL

**1018 C.R. STEEL**

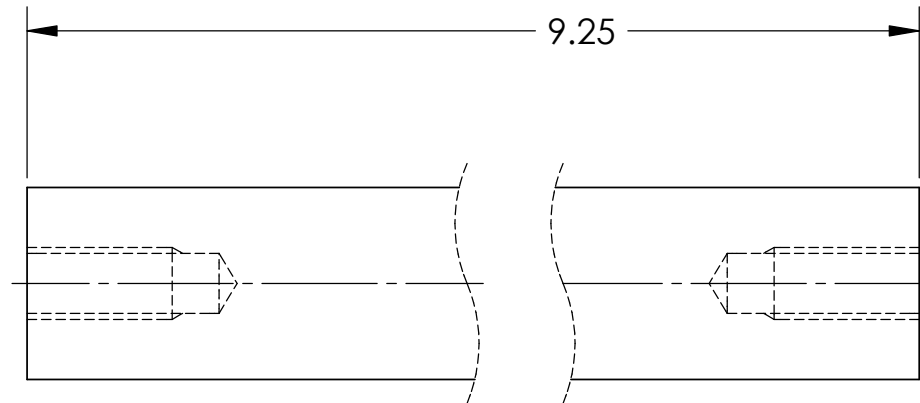
SCALE:

**1/1**

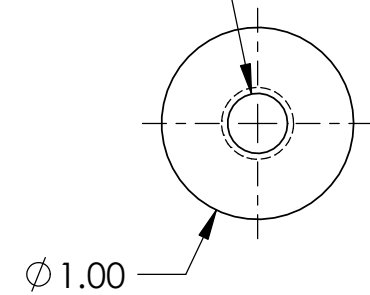


**MATERIAL:**

1018 Cold Rolled Steel



(2x)  $\phi$  .312  $\nabla$  1.000  
3/8-16 UNC - 2B  $\nabla$  .756



**PRO-TOOLS**

7616 INDUSTRIAL LANE TAMPA, FL. 33637  
TEL. (813) 986-9000 FAX (813) 986-5607  
EMAIL: SALES@PRO-TOOLS.COM

TITLE:

**ROLLER PIN**

DWG. NO.

**HMP-200-05**

SHEET:

**1 of 2**

REV:

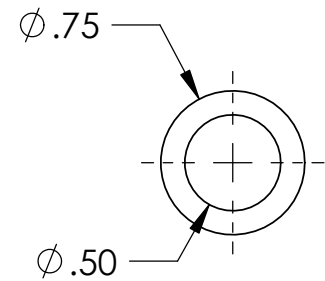
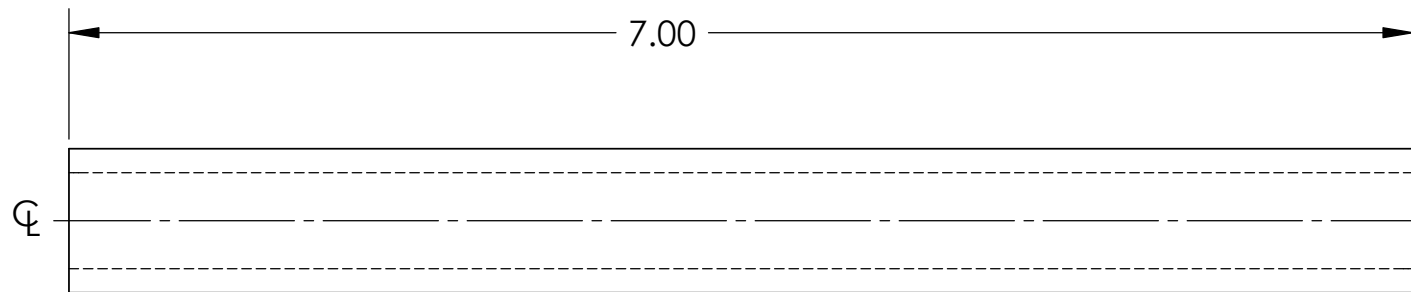
DRAWN  
**JODY**

MATERIAL

**1018 STEEL**

SCALE:

**1/1**



**PRO-TOOLS**  
 7616 INDUSTRIAL LANE TAMPA, FL. 33637  
 TEL. (813) 986-9000 FAX (813) 986-5607  
 EMAIL: SALES@PRO-TOOLS.COM

TITLE: <b>STABILIZER TUBE</b>			
DWG. NO. <b>HMP-200-04</b>		SHEET: <b>1 of 2</b>	REV:
DRAWN <b>JODY</b>	MATERIAL <b>D.O.M. TUBE</b>		SCALE: <b>1/1</b>

5

↑

4

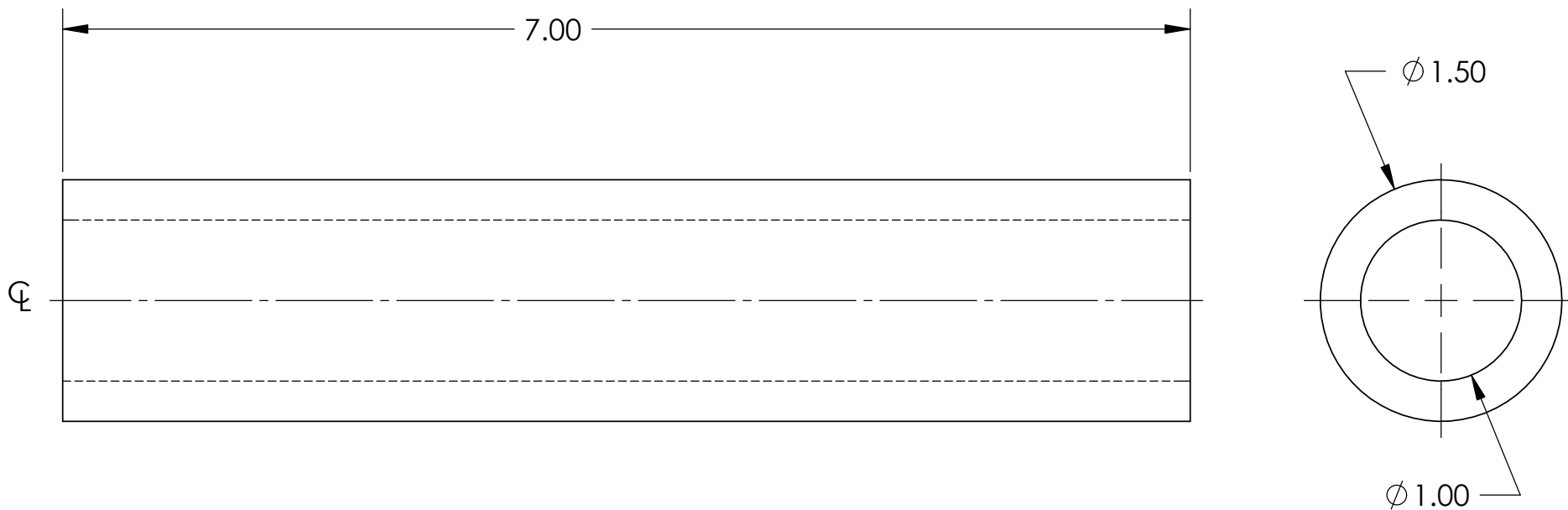
3

2

1

**MATERIAL:**

1.5" O.D. x 1" I.D. D.O.M. TUBE



**PRO-TOOLS**

7616 INDUSTRIAL LANE TAMPA, FL. 33637  
TEL. (813) 986-9000 FAX (813) 986-5607  
EMAIL: SALES@PRO-TOOLS.COM

TITLE: **DIE WRIST PIN SLEEVE**

DWG. NO. **HMP-200-06**

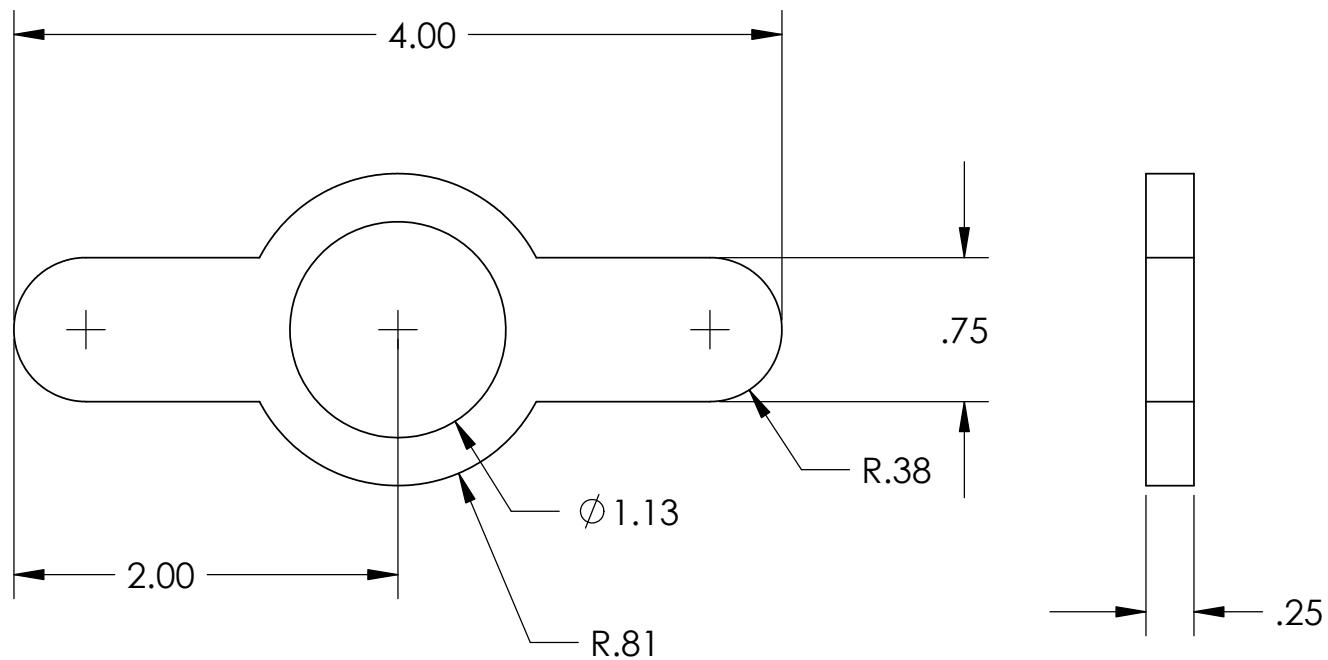
SHEET: **1 of 2**

REV:

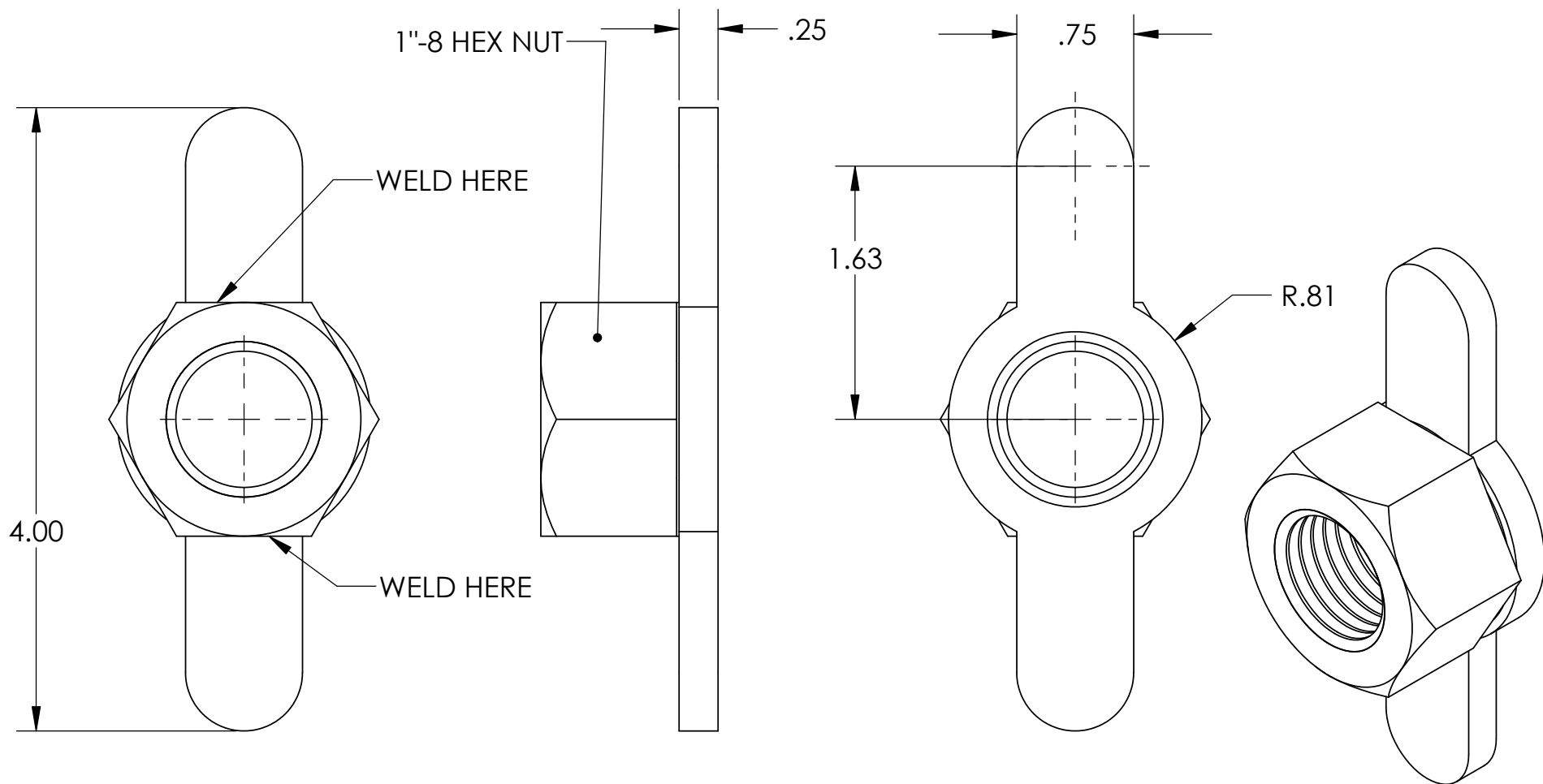
DRAWN  
**JODY**

MATERIAL  
**D.O.M. TUBE**

SCALE:  
**1/1**



<b>PRO-TOOLS</b> 7616 INDUSTRIAL LANE TAMPA, FL. 33637 TEL. (813) 986-9000 FAX (813) 986-5607 EMAIL: SALES@PRO-TOOLS.COM		TITLE: Speed Nut Wing	
		DWG. NO. HMP-200-SN	SHEET: 1 of 1
		DRAWN JODY	SCALE: 1/1
MATERIAL 1018 STEEL		REV:	



**PRO-TOOLS**  
 7616 INDUSTRIAL LANE TAMPA, FL. 33637  
 TEL. (813) 986-9000 FAX (813) 986-5607  
 EMAIL: SALES@PRO-TOOLS.COM

TITLE: **SPEED NUT ASSEMBLY**

DWG. NO. **SN-ASSEM**

SHEET:  
**1 of 1**

REV:

DRAWN  
**JODY**

MATERIAL

--

SCALE:  
**1/1**

5

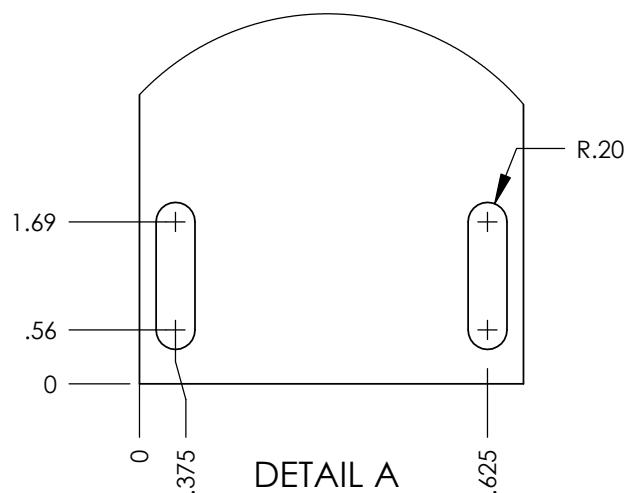
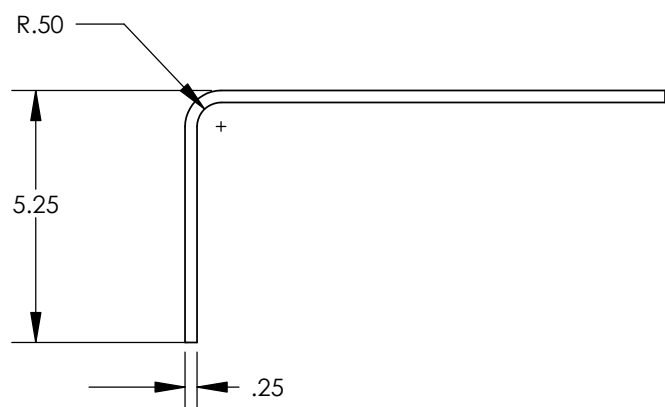
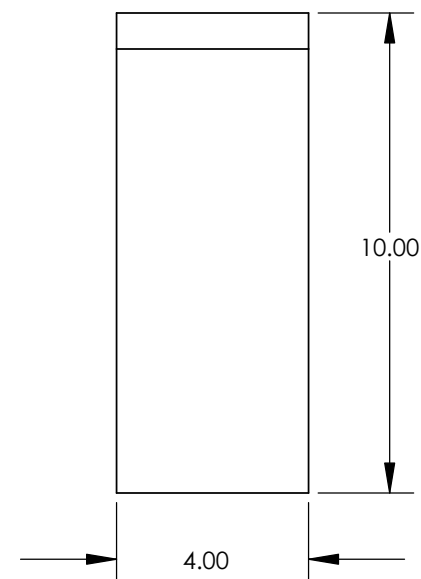
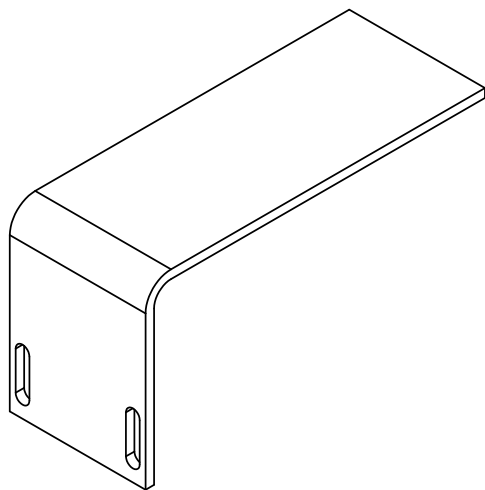
↑

4

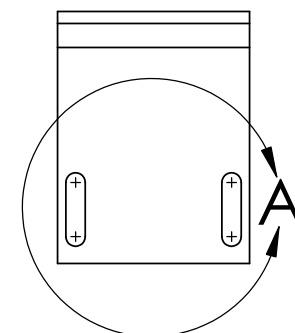
3

2

1

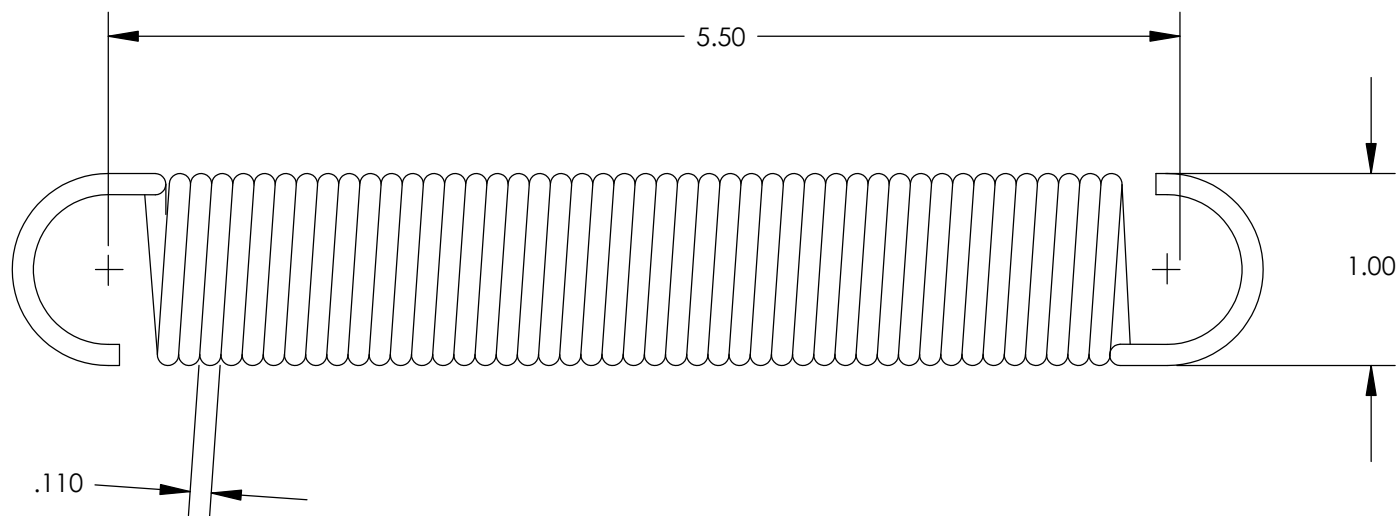


DETAIL A  
SCALE 1 : 2



**PRO-TOOLS**  
 7616 INDUSTRIAL LANE TAMPA, FL. 33637  
 TEL. (813) 986-9000 FAX (813) 986-5607  
 EMAIL: SALES@PRO-TOOLS.COM

TITLE: <b>SUPPORT BRACKET</b>		
DWG. NO. <b>HMP-200-011</b>	SHEET: <b>1 of 1</b>	REV:
DRAWN <b>JODY</b>	MATERIAL <b>C.R. STEEL</b>	SCALE: <b>1/1</b>



MATERIAL:  
.110 MUSIC WIRE

**PRO-TOOLS**  
7616 INDUSTRIAL LANE TAMPA, FL. 33637  
TEL. (813) 986-9000 FAX (813) 986-5607  
EMAIL: SALES@PRO-TOOLS.COM

TITLE: <b>SPRING</b>			
DWG. NO.	<b>SPRING</b>	SHEET: <b>1 of 2</b>	REV:
DRAWN <b>JODY</b>	MATERIAL <b>--</b>		SCALE: <b>1/1</b>