

DATA SHEET

Rollcage 6L OL244

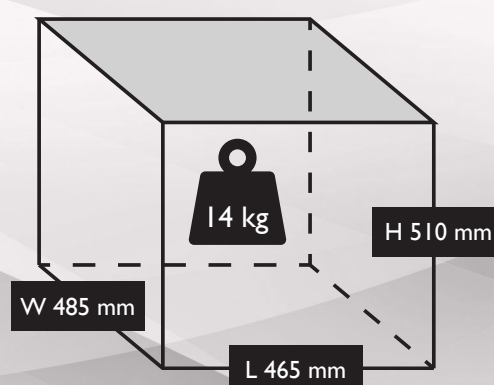
S-B4BA304FPS57I



UNIT DIMENSIONS



PACKAGE DIMENSIONS



TECHNICAL DATA

	Max. Pressure	8 Bar / 116 PSI
	Power	1.5HP / 1.1kW
	Capacity (displacement)	7.1 CFM / 200 L/Min
	Voltage	230 V / 50 Hz
	Supply	13 Amp Plug
	Pump	OL244
	FLC	7
	dB(A)	60
	Dimensions L x W x H (unit)	455 x 475 x 500 mm

	Dimensions L x W x H (boxed)	465 x 485 x 510 mm
	Weight	14 kgs
	Motor Speed	1450 RPM
	Oil Capacity	N/A
	Receiver	6 Ltr
	Head Bolt Torque	11 Nm
	Cable Length	1.3 Mtr
	Pump Speed	1450 RPM
	Outlet Thread Size	Series 25 Coupling



E & OE
Images shown are for illustration and may vary from the actual product

Unit 5, Tower Estate,
Warpsgrove Lane,
Chalgrove,
Oxon,
OX44 7XZ

Tel: +44(0)1865 892620
Fax: +44(0)1844 390955

sales@fps-compressors.co.uk
www.fps-compressors.co.uk



DATA SHEET

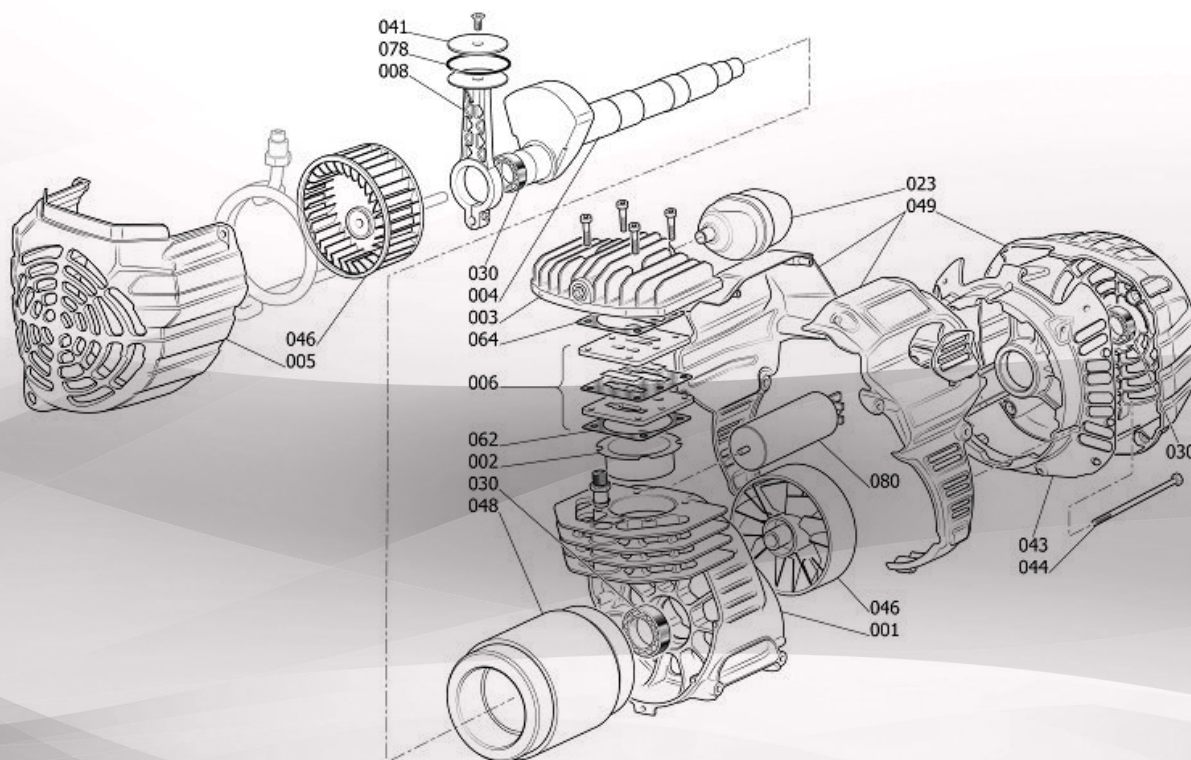
OL244

S-B400000

Rollcage 6L OL244 (S-B4BA304FPS571)



A2449



COMPONENTS (see drawing above)

Position	Part No.	Description
2	S-B431010	Cylinder
3	S-9417636	Head
6		Valve plate
8	S-0910110	Complete Con Rod
23	S-B480100	Air filter assembly
62	S-B450300	Cylinder plate gasket
64	S-9415052	Head plate gasket
80	S-9067023	Capacitor

OTHER SERVICE PARTS

Part No.	Description
S-PK-OL244	Service Kit
S-9602015	NRV Pastel
S-9602018	NRV Spring
S-9048063	NRV
S-9063084	Pressure Switch
S-9067023	Capacitor



E & OE
Images shown are for illustration and may vary from the actual product

Unit 5, Tower Estate,
Warpsgrove Lane,
Chalgrove,
Oxon,
OX44 7XZ

Tel: +44(0)1865 892620
Fax: +44(0)1844 390955

sales@fps-compressors.co.uk
www.fps-compressors.co.uk

